

PROMIS•E DRAW SOFTWARE



promis•e® draw

- PC-DRAW-STD
- PC-DRAW-CAD
- PC-DRAW-MNT

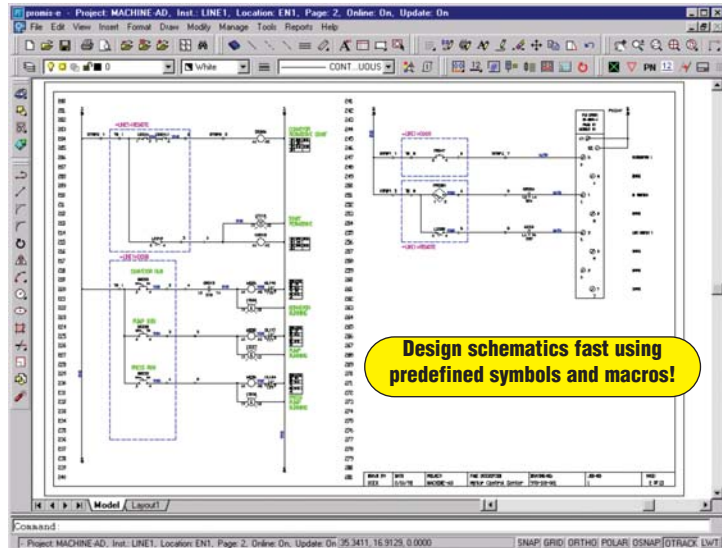
promis•e draw overview

If you need a simple, yet powerful tool for designing electrical control systems, you need promis•e draw. This advanced software runs as an application inside AutoCAD®. (A standalone version is also available that incorporates the AutoCAD OEM engine; it requires no additional CAD software to run.) It provides a host of intelligent schematic design functions plus a parts database and the ability to generate a quantified parts list based on what you've used in your drawings. As a result, you'll complete your work faster, more efficiently, with fewer errors.

Features

- Over 4000 AUTOMATIONDIRECT part numbers used for creating BOMs, estimates and other reports/lists
- Over 1200 symbols of AUTOMATIONDIRECT products used for creating CAD drawings; includes schematic symbols and panel layout components
- Integrated databases
- Fast schematic design
- Real time cross referencing
- Logical error checking
- Quantified parts list generation (bill of materials)
- Wire list
- Customize all formats and symbols to match your standards

Need even more power? Consider using promis•e draw *plus*. It offers all the convenient features of promis•e draw with even more functionality. Promis•e draw users can upgrade to promis•e draw *plus* at any time.



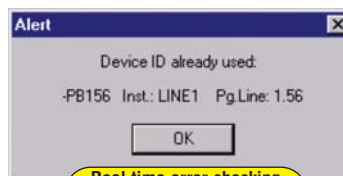
Creating schematics

Use promis•e draw to rapidly construct schematic diagrams using predefined symbols and macros (thousands of electrical symbols are included). Wires are automatically broken at symbol connection points and sections of the drawing can be copied and pasted to save time. The software performs many functions automatically including the generation of unique device IDs for each symbol and the cross-referencing of related symbols (such as contacts and coils). All cross-referencing can extend across multiple pages.

Promis•e draw recognizes logical interconnections between devices in a schematic. A wire is a wire and not just a graphic line. Another automatic function is real time error checking, which alerts the user while the schematic is being created to conditions such as short circuits, symbols and wires without connections, duplicate wire numbers, duplicate device IDs and over-assignment of contacts.

Functional summary

- Single, 3-phase line generator
- Logical drawing lines (wires)
- Move and modify routines
- Real-time device cross referencing
- Real-time error checking
- Auto device ID assignment
- Auto wire break/mend
- Online tutorial and documentation
- Page copy with auto ID update
- Electrical symbol library included
- Macro library included
- Parts database (MS Access)
- Assign part numbers to symbols
- Quantified parts list
- Wire list
- PLC list
- Revision control
- Shared projects with online instant update
- Custom symbol, macro creation
- Symbol attribute definition
- Parent/child device relationship
- Fields (remote location areas)
- Manual wire number assignment
- DWG/DXF file support
- Import/Export PLC text
- Project defaults
- Predefined, customizable JIC & IEC page formats

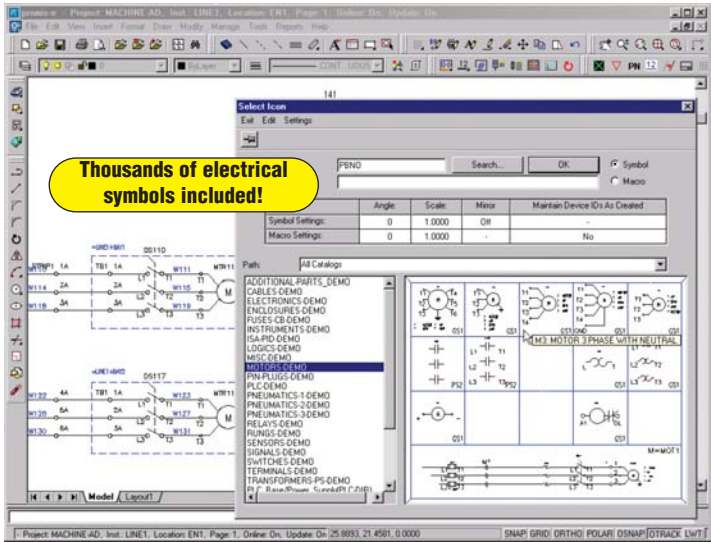


Real time error checking prevents costly rework later.

PROMIS•E DRAW SOFTWARE

Symbols library

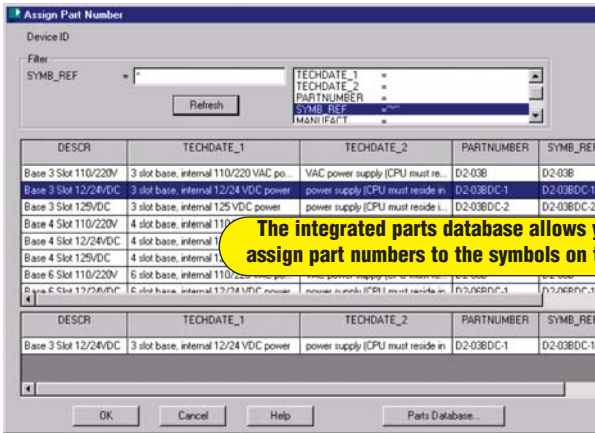
An electrical symbol library with hundreds of symbols is included. The user can select symbols by entering the symbol name or by selecting them from a toolbar or icon window. Users can create their own custom symbols or use symbols from existing libraries. The following symbol libraries are included: standard electrical (JIC or IEC), *DirectLogic*, Allen-Bradley, GE, Omron, Cutler-Hammer, Siemens, and Schneider. Optional symbol libraries including Process Control (ISA), Hydraulics and Pneumatics are available through ECT International, Inc. Call 262-781-1511 or visit their website at www.ecti.com.



Available I/O libraries

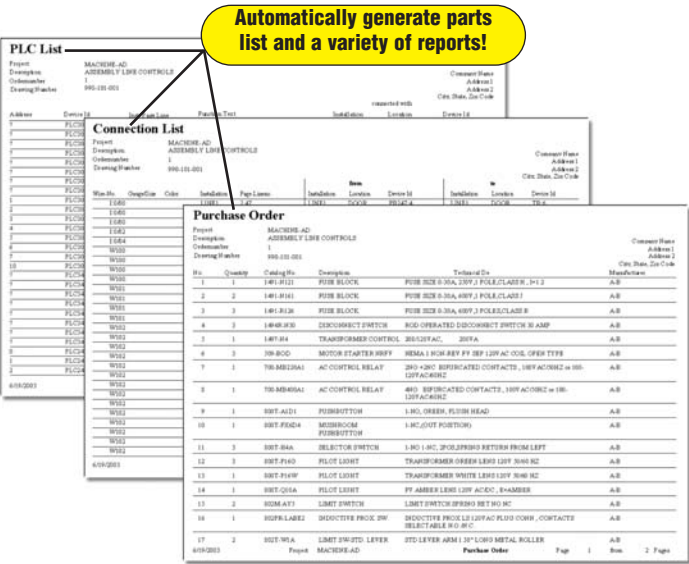
Over a million parts in manufacturers parts databases are available for use in *promis•e draw* including:

- AUTOMATIONDIRECT
- Allen-Bradley
- Siemens
- Schneider
- Weidmuller
- TCP
- ABB
- Baldor
- Brad Harrison
- Bussmann
- Klockner-Moeller
- Pepperl+Fuchs



Report generation

Once your drawings are created, the automatic report functions in *promis•e draw* allow you to generate a quantified parts list, a wire list and a variety of other informative documents.



PROMIS•E DRAW PLUS SOFTWARE



promis•e® draw plus

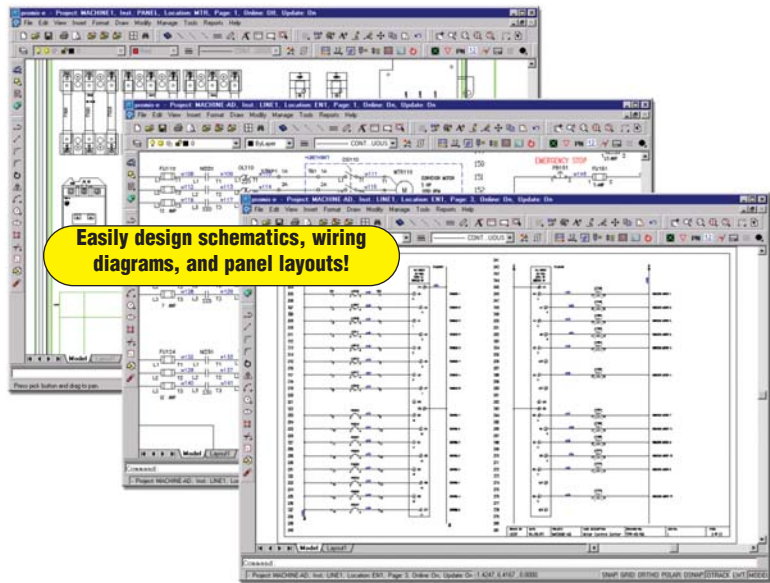
- PC-DPLUS-STD
- PC-DPLUS-CAD
- PC-DPLUS-UGD
- PC-DPLUS-MNT

promis•e draw plus overview

The idea behind promis•e draw *plus* is to take all the powerful, convenient functionality of promis•e draw and add even more, giving designers of electrical control systems an unbeatable productivity tool. This software runs as an application inside AutoCAD® (a stand-alone version is also available that incorporates the AutoCAD OEM engine; it requires no additional CAD software to run). With promis•e draw *plus* you get intelligent design functions plus an integrated parts database for generating schematics, parts lists and a variety of other useful documents. Automatic ID assignment along with real time error checking and cross-referencing make designing quick and easy. You'll complete your work faster, more efficiently, with fewer errors.

PLC schematic generator

Automatically generates drawings of programmable logic controller I/O connections based on information imported from PLC program files, spreadsheets, etc. An incredible time-saver! For each module, you can select the parameters for the input or output devices and terminals connected to each I/O point. Then you activate the Create Drawing function and the software automatically creates the PLC module drawing pages in the specific project.

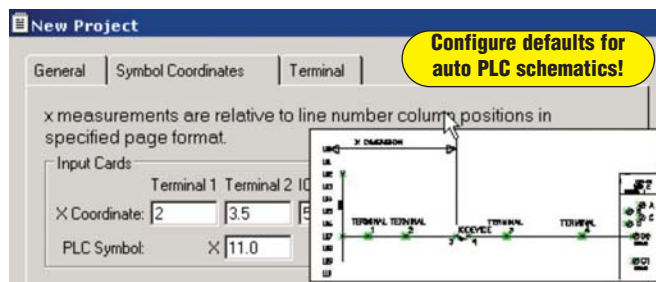
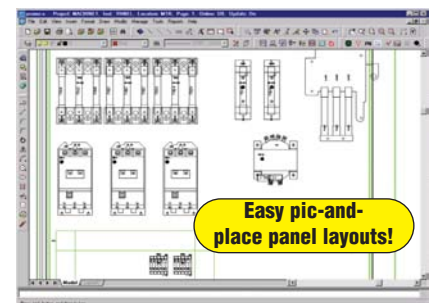


Features

- Over 4000 AUTOMATIONDIRECT part numbers used for creating BOMs, estimates and other reports/lists
- Over 1200 symbols of AUTOMATIONDIRECT products used for creating CAD drawings; includes schematic symbols and panel layout components
- Integrated databases
- Fast schematic design
- Real time cross referencing
- Logical error checking
- PLC schematic generator
- Automated panel layout mode
- Automatic MS-Access list generation (over 20 reports)
- Customize all formats and symbols to match your standards

Automated panel layout mode

Activate the panel layout function and promis•e draw *plus* presents each device in the selected installation, one at a time. If a layout symbol has been specified for the part, it appears on the drawing screen and you select a position for it. If no layout symbol has been specified, the software draws a box based on the dimensions in the database. The software automatically places the device ID on the symbol or box.



PROMIS•E DRAW PLUS SOFTWARE

Functional summary

- PLC schematic generator
- Automated panel layout mode
- Automatic wire numbering
- Enhanced navigator search tool
- MS-Access report generation
- Project copy and rename functions
- Single, 3-phase line generator
- Logical drawing lines (wires)
- Move and modify routines
- Real-time device cross referencing
- Real-time error checking
- Auto device ID assignment
- Auto wire break/mend
- Online tutorial and documentation
- Page copy with auto ID update
- Electrical symbol library included
- Macro library included
- Parts database (MS Access)
- Assign part numbers to symbols
- Quantified parts list
- Wire list
- PLC list
- Cable list
- Terminal strip list
- Revision control
- Shared projects with online instant update. Custom symbol, macro creation
- Symbol attribute definition
- Parent/child device relationship
- Fields (remote location areas)
- Manual wire number assignment
- DWG/DXF file support
- Import/Export PLC text
- Project defaults
- Predefined, customizable JIC & IEC page formats
- Parts lists and other reports are generated automatically

MS-Access reports

Generate over 20 project-related lists and reports for Microsoft Access. These reports include: bill of materials, wire list, PLC list, cable list, job cost analysis, page list and terminal strip list. A runtime version of Microsoft Access is included with promis•e draw plus.

Automatic wire numbering

Number all the wires on all the pages in a project in one step! The numbering format is extremely flexible. You can also assign values for color, gauge and other wire parameters.

Enhanced navigator search tool

Use this simple yet powerful function to instantly jump to the desired page and line in your project. Search by ID, wire number, part number or simply by clicking on a related symbol or cross reference.

Project copy and rename functions

Make copies or rename an existing project without losing any of the built-in intelligence.

promis•e draw and promis•e draw plus system requirements

Software requirements:

- Windows NT 4.0 SP5 or later, Windows 2000 or XP
- Add-on version: requires AutoCAD 2000/2000i or 2002
- Standalone version: no additional CAD software required

Hardware requirements:

- Pentium CPU, 500Mhz or faster
- 128MB RAM min., 256MB recommended
- Video: 1024x768 or better recommended

SOFTWARE

Part Number	Name of Product	Price	Description
PC-DRAW-STD	promis•e draw AutoCAD® Add-On Package	check	promis•e drawing package, version 4.05 or higher, software for control system design. Generates control system schematics, panel layouts, bills of material, wire lists and more to automate the design process. Runs as an application inside AutoCAD.
PC-DPLUS-STD	promis•e draw plus AutoCAD® Add-On Package	check	promis•e draw plus package, version 4.05 or higher, software for control system design. Generates control system schematics, panel layouts, bills of material, wire lists and more to automate the design process. The plus package includes all the features of draw, plus automated panel layout, PLC I/O diagram generator and automatic wire numbering. Runs as an application inside AutoCAD.
PC-DRAW-CAD	promis•e draw Stand Alone Package	check	promis•e draw stand alone package, version 4.05 or higher, software for control system design. Generates control system schematics, bills of material, wire lists and more to automate the design process. The self-contained software system incorporates the AutoCAD OEM engine; requires no additional CAD software.
PC-DPLUS-CAD	promis•e draw plus Stand Alone Package	check	promis•e draw plus stand-alone package, version 4.05 or higher, software for control system design. Generates control system schematics, panel layouts, bills of material, wire lists and more to automate the design process. The plus package includes all the features of draw, plus automated panel layout, PLC I/O diagram generator and automatic wire numbering. Runs as an application inside AutoCAD. The self-contained software system incorporates the AutoCAD OEM engine; it requires no additional CAD software.
PC-DPLUS-UGD	promis•e draw plus Upgrade Package (Requires Proof of Purchase)	check	Upgrade for promis•e draw to promis•e draw plus. Customer must provide proof of purchase for promis•e draw in order to purchase.
PC-DRAW-MNT	promis•e draw Annual Maintenance Agreement	check	promis•e draw Annual Maintenance Agreement. Any user may purchase within 12 months of full package purchase; provides software updates, enhancements, and access to ECT web site insider's club.
PC-DPLUS-MNT	promis•e draw plus Annual Maintenance Agreement	check	promis•e draw plus Annual Maintenance Agreement. Any user may purchase within 12 months of full package purchase; provides software updates, enhancements, and access to ECT web site insider's club.