

# INDUSTRIAL MONITORS FOR HARSH ENVIRONMENTS

## FLI series light industrial monitors

Our light industrial displays are a practical product designed for most industrial environments. We use a high-quality LCD screen within a slim powder-coated steel chassis. Our light industrial monitors are bright and crisp with a large viewing angle. They automatically scale (VGA-SXGA) to the resolution you choose. With a standard VGA interface, these monitors are plug-compatible with any standard PC video port. They require an external 12VDC source, such as our PS-MON-A or one of our other 12-volt power supplies.

These displays are our slimmest design. When you need more than a desktop monitor, yet you don't need to pay for the extra rugged design of our heavy industrial monitors, a light industrial display is the practical choice.

## FPM series heavy industrial monitors

The FPM series is our most rugged design. They are proven performers in the nastiest industrial environments. We incorporate a top-quality LCD screen within a tough stainless steel chassis. Our heavy industrial monitors are bright and crisp with wide viewing angles. The advanced graphics controller auto-scales, so you can choose the resolution that looks best to you (*FPM-180, FPM-170 and FPM-150 scale from VGA-SXGA, the FPM-120 from VGA-SVGA*). Using the standard VGA interface, these monitors are plug-compatible with any standard commercial or industrial grade PC.

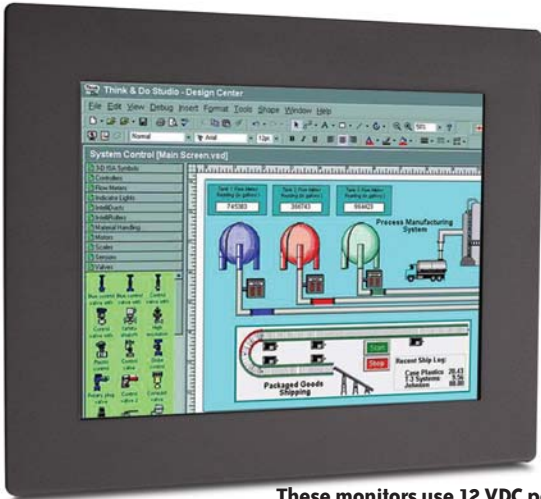
From the solid bezel, which won't compromise the panel seal by flexing, to the aircraft-rated fasteners and hot-glued connectors for extra vibration resistance, our FPM series monitors stand up in any environment.

### Both lines offer:

- Standard VGA signal
- Plug-n-play set up, just like a desktop monitor
- No PC slots required to connect to monitor

## Light industrial monitors

In 15" and 18"



These monitors use 12 VDC power — use PS-MON-A or one of our other 12 volt power supplies.



PS-MON-A

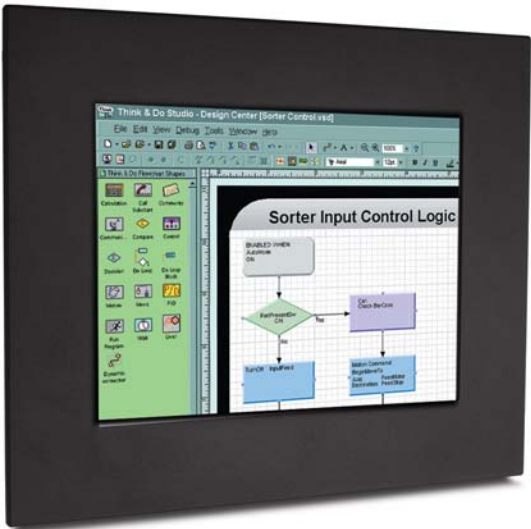


PSP12-060C

## Heavy industrial monitors

In slim 12", 15", 17" and 18"

These monitors use standard 110 VAC power.



# INDUSTRIAL MONITORS AND TOUCH MONITORS

LCD Monitor Specifications												
Part Numbers	FPM-120	FPM-120-TS	FPM-150	FPM-150-TS	FPM-170	FPM-170-TS	FPM-180	FPM-180-TS	FLI-150	FLI-150-TS	FLI-180	FLI-180-TS
<b>Price</b>	check	check	check	check	check	check	check	check	check	check	check	check
<b>Screen Specifications (Active Matrix)</b>												
<b>Display Type</b>	TFT Active Matrix		TFT Active Matrix		TFT Active Matrix		TFT Active Matrix		TFT Active Matrix		TFT Active Matrix	
<b>Active Screen Area</b>	9.69" x 7.25"		11.97" x 8.98"		13.3" x 10.64"		14.14" x 11.31"		11.97" x 8.98"		14.14" x 11.31"	
<b>Colors Supported</b>	256,000		24bit (16M)		24bit (16M)		24bit (16M)		24bit (16M)		24bit (16M)	
<b>Brightness (Nits)</b>	300		450		250		300		250		200	
<b>Contrast Ratio</b>	200:1		300:1		500:1		350:1		300:1		300:1	
<b>Maxium Screen Resolution*</b>	VGA-SVGA		VGA-SXGA		VGA-SXGA		VGA-SXGA		VGA-SXGA		VGA-SXGA	
<b>Native Resolution (Best Picture)</b>	SVGA		XGA		SXGA		SXGA		XGA		SXGA	
<b>Auto Adjust Screen</b>	Yes		Yes on power up		Yes on power up		Yes on power up		Yes on power up		Yes	
<b>Horizontal Viewing Angle (L/R)</b>	55/55		70/70		85/85		80/80		70/70		80/80	
<b>Vertical Viewing Angle (Up/Down)</b>	40/45		55/65		85/85		80/80		55/65		80/80	
<b>Video Interface</b>												
<b>VGA (HD-15F)</b>	YES											
<b>DVI (Digital Video Interface)</b>	NO		NO		YES		YES		NO		NO	
<b>NTSC</b>	NO		NO		YES		YES		YES		NO	
<b>S-Video</b>	NO		NO		YES		YES		YES		NO	
<b>Electrical Specifications</b>												
<b>Input Power</b>	20W		25W		30W		48W		25W		33W	
<b>Input Voltage</b>	120/240VAC Auto-switching		120/240VAC Auto-switching		120/240VAC Auto-switching		120/240VAC Auto-switching		12VDC (nominal)		12VDC (nominal)	
<b>Current Draw Amps (At Voltage)</b>	.15 (120VAC)		.20 (120VAC)		.25 (120VAC)		.40 (120VAC)		2.0 (12VDC)		2.75 (12VDC)	
<b>Black Light Lamp Life (Half-life hours)</b>	50K		35K		35K		40K		35K		30K	
<b>Mechanical Specifications</b>												
<b>NEMA 4/12 (installed in suitable enclosure)</b>	4/12		4/12		4/12		4/12		4/12		4/12	
<b>Chassis Depth</b>	2.38"		2.68"		2.68"		3.00"		1.75"		2.13"	
<b>Bezel OD</b>	15"x12.5"		17.56"x14.56"		17.56"x14.56"		19.0"x15.72"		16.21"x13.22"		19.0"x15.72"	
<b>Bezel Finish (All powder coated)</b>	Black textured		Black textured		Black textured		Black textured		Gray and black		Gray and black	
<b>Bezel Construction</b>	.25" Machined Alum.		.25" Machined Alum.		.25" Machined Alum.		.25" Machined Alum.		Steel		Steel	
<b>Chassis Construction</b>	16 Ga SS		16 Ga SS		16 Ga SS		16 Ga SS		16 Ga Steel		16 Ga Steel	
<b>Recessed Cable Exit</b>	Yes		Yes		Yes		Yes		Yes		Yes	
<b>Environmental Specifications</b>												
<b>Operating Temp °C (°F)</b>	0 to 50 (32 to 122)		0 to 50 (32 to 122)		0 to 50 (32 to 122)		0 to 50 (32 to 122)		0 to 50 (32 to 122)		0 to 50 (32 to 122)	
<b>Storage Temp °C (°F)</b>	0 to 60 (32 to 140)		0 to 60 (32 to 140)		0 to 60 (32 to 140)		0 to 60 (32 to 140)		0 to 60 (32 to 140)		0 to 60 (32 to 140)	
<b>Operating/Storage Humidity (%)</b>	10 to 95		10 to 95		10 to 95		10 to 95		10 to 95		10 to 95	

Touchscreen Specifications		All Touchscreen (-TS) Models	
<b>5 Wire Touch</b>	Yes		
<b>Touch Resolution (points/inch)</b>	400 ppi		
<b>Screen Finish</b>	Anti-reflective		
<b>Chemical Resistance</b>	Acetone, MEK, mineral sprits, Isopropyl alcohol, Methylene chloride		
<b>Estimated Life</b>	>35 million touches in one location		
<b>Computer Interface</b>	Serial RS-232 (standard)		
<b>Electrostatic Protection</b>	IEC 801-2		
Impact Window		All Non-touch Models	
<b>Material</b>	0.118" acrylic		
<b>Finish</b>	Anti-glare hard coat		

# HEAVY INDUSTRIAL LCD MONITORS

12" FPM-120 & FPM-120-TS

17" FPM-170 & FPM-170-TS

15" FPM-150 & FPM-150-TS

18" FPM-180 & FPM-180-TS

(-TS models have resistive touchscreens)

**Side ventilation:** no top vents for better dust and spill protection with minimal heat build-up

**16-gauge stainless steel chassis**

provides corrosion resistance and extra strength. Flip-down back panel allows easy access for servicing the lamp.

**90-264 VAC input with power filter** and internal continuous duty power supply accommodates industrial power environment.

Easy external access to fuses

**Screen set-up** via rear membrane keypad prevents tampering

**"Auto-adjust"** button on back panel keypad for easy display optimization

**Slim profile and recessed cable connections** don't waste your panel space

Plenty of flange clearance

**Units have pressed-in studs and heavy-duty machined aluminum bezel** with powder coat finish. Solid bezel doesn't flex and compromise moisture seal. Attractive polymer finish is resistant to scratches and chemicals.

**Premium viewing angles:**

18" has 80°/80° horizontal, 80°/80° vertical  
15" has 70°/70° horizontal, 55°/65° vertical  
12.1" has 55°/55° horizontal 40°/45° vertical  
*This allows everyone in the work area to read the display!*

**Auto-scaling, auto-adjusting** (15", 17", and 18" are VGA-SXGA, 12.1" is VGA-SVGA)  
Full screen display at your choice of resolution

**400 ppi, 5 wire, resistive touch-screen (optional):**  
400 ppi allows fine-featured touch control; works with gloved hands and is the most durable and reliable in industrial environments.

**Three-year guarantee** on touch screen

Robust, flexible touchscreen drivers for WinXP, Win2000, WinNT, Win98, Win95 and DOS provided

**Software works on Com 1-4** to accommodate other applications

**UL, cUL, CE approved**

OPER. INT.

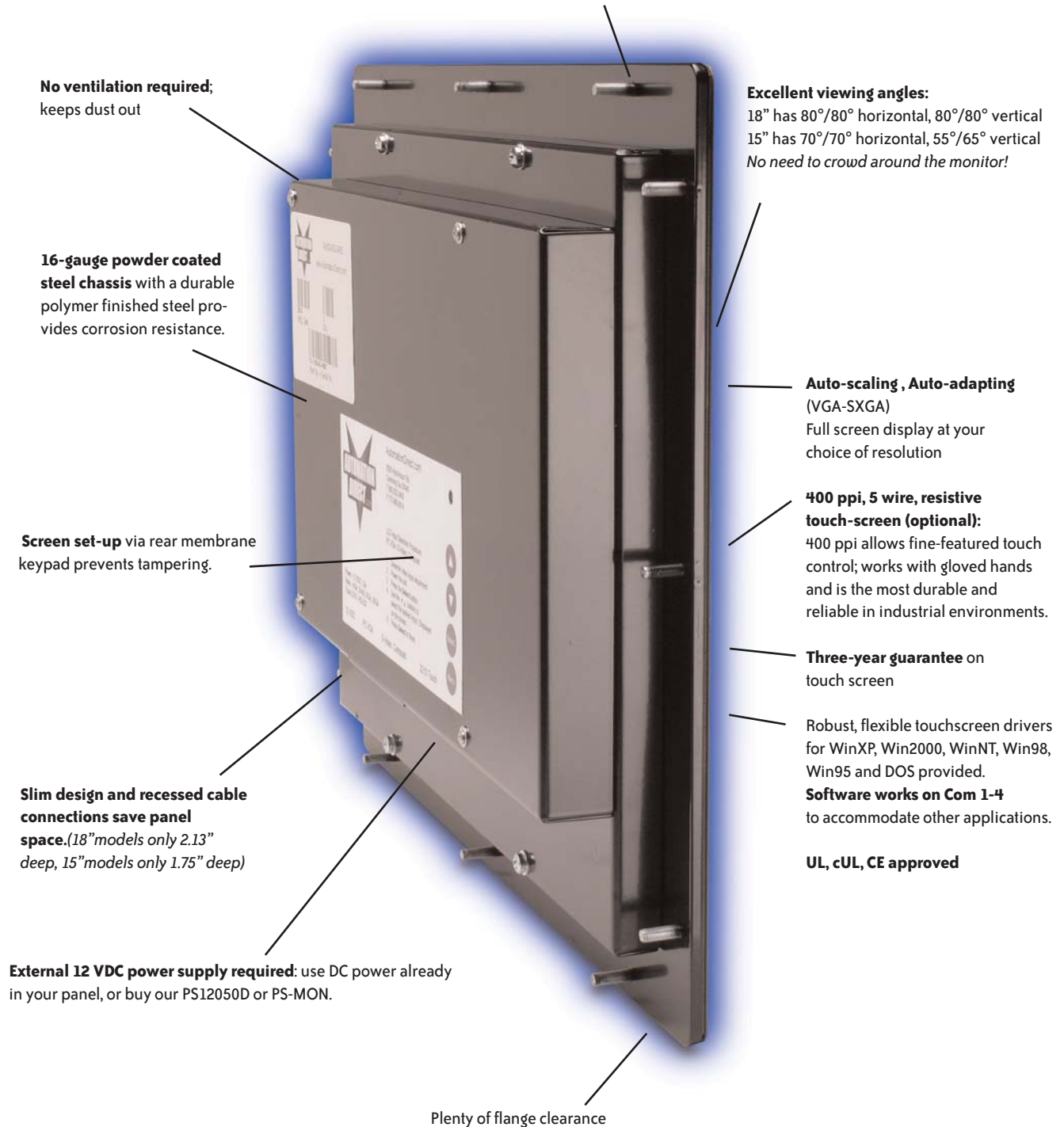
# LIGHT INDUSTRIAL LCD MONITORS

15" FLI-150 & FLI-150-TS

18" FLI-180 & FLI-180-TS

*(-TS models have resistive touchscreens)*

**Pressed-in studs and 2-piece bezel** (solid steel plate with powder-coated, steel front panel). Solid bezel doesn't flex and compromise moisture seal. Steel front panel provides an industrial quality finish and an attractive appearance.



**No ventilation required;**  
keeps dust out

**16-gauge powder coated steel chassis** with a durable polymer finished steel provides corrosion resistance.

**Screen set-up** via rear membrane keypad prevents tampering.

**Slim design and recessed cable connections save panel space.**(18" models only 2.13" deep, 15" models only 1.75" deep)

**External 12 VDC power supply required:** use DC power already in your panel, or buy our PS12050D or PS-MON.

Plenty of flange clearance

**Excellent viewing angles:**  
18" has 80°/80° horizontal, 80°/80° vertical  
15" has 70°/70° horizontal, 55°/65° vertical  
*No need to crowd around the monitor!*

**Auto-scaling , Auto-adapting** (VGA-SXGA)  
Full screen display at your choice of resolution

**400 ppi, 5 wire, resistive touch-screen (optional):**  
400 ppi allows fine-featured touch control; works with gloved hands and is the most durable and reliable in industrial environments.

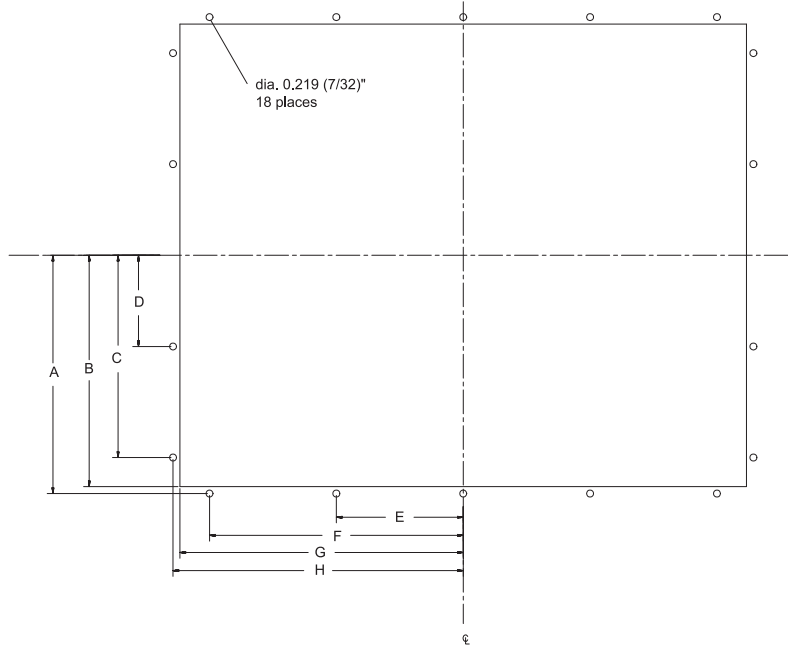
**Three-year guarantee** on touch screen

Robust, flexible touchscreen drivers for WinXP, Win2000, WinNT, Win98, Win95 and DOS provided.  
**Software works on Com 1-4** to accommodate other applications.

**UL, cUL, CE approved**

# INDUSTRIAL LCD MONITOR DIMENSIONS

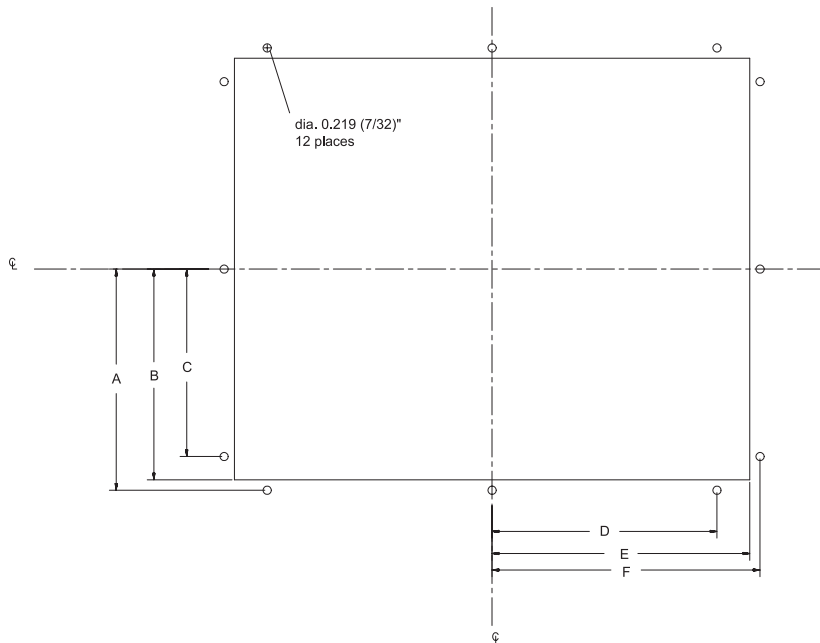
Template dimensions for FLI-180, FLI-180-TS, FPM-180 and FPM-180-TS models



Cut Out Dimensions (inches)								
Part Number	A	B	C	D	E	F	G	H
<b>FLI-180</b> <b>FLI-180-TS</b>	7.49	7.25	6.38	2.38	4.00	8.00	8.89	9.13
<b>FPM-180</b> <b>FPM-180-TS</b>	7.51	7.30	6.38	2.88	4.00	8.00	8.93	9.15



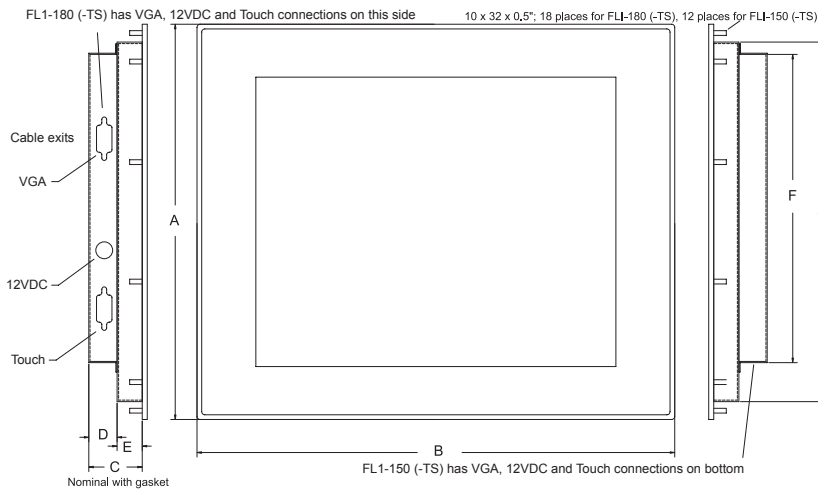
Template dimensions for FLI-150, FLI-150-TS, FPM-120, FPM-120-TS, FPM-150, FPM-150-TS, FPM-170 and FPM-170-TS models



Cut Out Dimensions (inches)						
Part Number	A	B	C	D	E	F
<b>FLI-150</b> <b>FLI-150-TS</b>	6.25	6.03	5.00	6.00	7.53	7.75
<b>FPM-120</b> <b>FPM-120-TS</b>	5.90	5.63	5.00	6.00	6.88	7.15
<b>FPM-150</b> <b>FPM-150-TS</b>	7.00	6.78	4.00	5.00	8.28	8.50
<b>FPM-170</b> <b>FPM-170-TS</b>	7.00	6.78	4.00	5.00	8.28	8.50

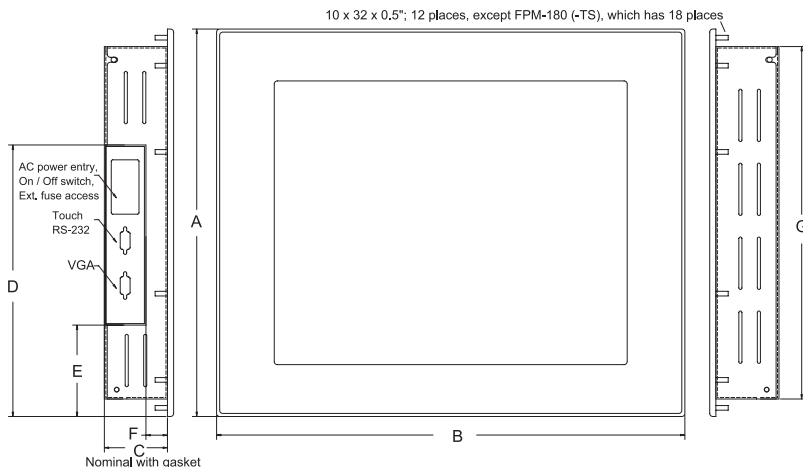
# INDUSTRIAL LCD MONITOR DIMENSIONS

## Outside dimensions for FLI-150, FLI-150-TS, FLI-180 and FLI-180-TS models



Outside Dimensions (inches)							
Part Number	A	B	C	D	E	F	G
<b>FLI-150</b> <b>FLI-150-TS</b>	13.22	16.21	1.75	1.06	0.69	8.03	11.02
<b>FLI-180</b> <b>FLI-180-TS</b>	15.72	19.00	2.13	1.13	1.00	12.26	14.30

## Outside dimensions for FPM-120, FPM-120-TS, FPM-150, FPM-150-TS, FPM-170, FPM-170-TS, FPM-180 and FPM-180-TS models



Outside Dimensions (inches)							
Part Number	A	B	C	D	E	F	G
<b>FPM-120</b> <b>FPM-120-TS</b>	12.50	15.00	2.38	9.87	2.57	0.76	10.87
<b>FPM-150</b> <b>FPM-150-TS</b>	14.56	17.56	2.68	10.88	3.68	1.06	13.31
<b>FPM-170</b> <b>FPM-170-TS</b>	14.56	17.56	2.68	10.88	3.68	1.06	13.31
<b>FPM-180</b> <b>FPM-180-TS</b>	15.72	19.00	3.00	11.02	3.71	0.87	14.30



# POWER SUPPLIES: MOLDED

## PS-MON-A

The PS-MON-A 12 VDC supply is used as a convenient source of DC-power for our FLI series of PC monitors. The PS-MON-A has a standard 3-prong, 110 VAC outlet plug on the input side and a standard right-angle, 12 VDC coaxial plug (ID 2.0mm/OD 5.5mm/Barrel length 10mm/inside positive) on the output side. The PS-MON-A provides 5 A (60 W) of 12 VDC power.

## Specifications

- Input voltage: 110-240 VAC/1.5 A, 50-60 Hz
- Output voltage: 12 VDC nominal
- Output current: 5 A nominal
- Output power: 60 W maximum
- UL Listed

