

ENCLOSURES OVERVIEW

AutomationDirect has teamed up with Hubbell/Wiegmann to offer a full line of NEMA industrial enclosures and accessory parts. You've invested time, talent, and money in your control system. Protect it with a quality enclosure.

What is a NEMA enclosure?

NEMA enclosures meet the National Electrical Manufacturers Association standards for performance and protection of the electrical equipment installed within them. They are typically made from carbon steel or stainless steel. NEMA enclosures range in size from small pushbutton boxes to room-size panels. Enclosures are given a NEMA rating according to the types of applications the enclosure serves.

What are NEMA enclosures used for?

NEMA enclosures house all kinds of electrical components from simple terminal blocks, to industrial automation systems, to high voltage switchgear. In industrial automation systems, NEMA enclosures often house motor controls, drives, PLC/PC control systems, pushbuttons, and termination systems. Some enclosures are shaped to be operator consoles.

Who is Hubbell/Wiegmann?

Hubbell Incorporated has been in business since the late 1800s. Like his contemporaries, Edison, Ford, and Westinghouse, Harvey Hubbell II contributed to both spheres of progress: new design and manufacturing innovation. Wiegmann has been building high quality industrial enclosures for over 75 years. In 1994, the company was purchased from the Wiegmann family by Hubbell Electrical Products. With the resources and backing of Hubbell, millions of dollars have been injected into the Wiegmann manufacturing facility. Foamed-in-place gaskets, powder coating, and smooth plasma corner welding are only a few of the new

product innovations. The enclosures are made in Freeburg, Illinois by skilled craftsmen with the aid of sophisticated Computer Numerical Controlled machinery. Wiegmann supplies enclosures for the OEM, commercial construction, and MRO markets. Wiegmann continues to modernize and automate their enclosure manufacturing facility.

Why did we choose to offer Hubbell/Wiegmann enclosures?

Integrators and OEMs need high-quality enclosures for their control systems.

We have thousands of customers using our PLCs, motor drives, contactors, and terminal blocks. Enclosures are needed for every control system. We decided to team up with one of the largest enclosure manufacturers in North America to offer you the quality and value you've become accustomed to from AUTOMATIONDIRECT.

Do we have the enclosure you need?

AUTOMATIONDIRECT offers over 1200 part numbers across NEMA 1, 3R, 4, 4X, 12, and 4/12 standards, ready for immediate shipment. We offer same-day shipping on select enclosure models and accessories direct from the Hubbell/Wiegmann manufacturing facility in Freeburg, IL. Other sizes and products can be shipped within 10 days.

Using electronic brokering, we can offer a wide selection of enclosure styles and sizes at great savings to our customers. In most cases, you can purchase an enclosure from us for half of the competitors' list prices. While AUTOMATIONDIRECT does not offer custom enclosures, one of our wide selection of quality Hubbell/Wiegmann enclosures should be perfect for your practical industrial automation solution.



NEMA 1

Wall-Mount Enclosures

Small, Medium, and Large NIC, Junction Boxes
Series: N1C, N1C_LP, SC, SC_G, SC_NK, SC_GNK



NEMA 4/12

Single Door, Wall-Mount Enclosures

Series: N412, N412_SS (stainless steel)



**floor-mount
available
also**

NEMA 4X and other Stainless Steel Enclosures

(All parts are 304 stainless steel)

NEMA 4X Series: BN4_SS, BN4_CHSS, SSN4, SSN4D

Other Stainless Steel: N412_SS (see NEMA 412)
PBSS (see NEMA 12 Pushbuttons)
P_SS (see subpanels)

NOTE:

An underscore indicates numbers. (Example: the BN4_CH series has enclosure BN4060604CH. There is no underscore shown for trailing digits.)



NEMA 12

“JIC” Wall-Mount Enclosures

Series: B, B_SC, JIC, B_CH, WA_GIE



NEMA 12

Single/Two-Door, Wall-Mount Enclosures

Series: N12, WA_WF, WA_FM



NEMA 12

Floor-Mount and Freestanding Enclosures

Series: N12, WA_FS, WA_FSD, WA_FSDA, WA_FSDAD, WA_M_E



NEMA 4

“JIC” Wall Mount Enclosures

Series: BN4, BN4_CH



NEMA 4

Single-Door, Wall-Mount Enclosures

Series: N4



NEMA 4

Floor-Mount and Freestanding Enclosures

Series: N4D, N4S_FS



NEMA 3R

Wall Mount Junction Boxes and Wiring Trough

Series: RSC, RHC, RSCG



NEMA 12

Pushbutton Enclosures

Series: PB, PBGX, PBXD, PBXY, PSL, WPBA
PBSS(stainless steel)



NEMA 12

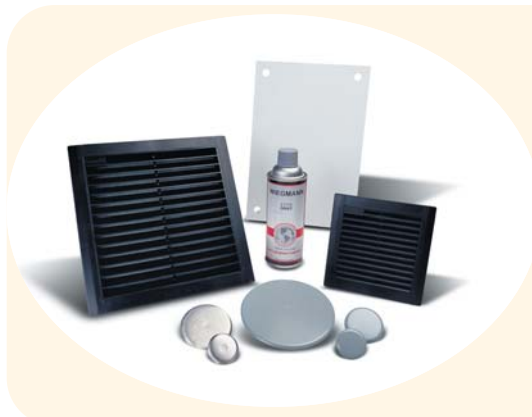
Operator Consoles

Series: W, W1C, WC_B, WC_BD, WC_C, WC_P, WC_T, WC_W, WA_CCOL, WA_PCOL, WA_BASE



Subpanels and Panel Accessories

Series: P, N1P, NP, NPDD, P_SS, WA_P_F, WA_SMP, WA_SOF, WA_FSCPS



Enclosure Accessories

Fans and filters: WPF_BK, WPF_-BK, WPGA_BK, WPGA, WPFM

Vortex coolers: W7

Hole seals: WAS, WAS_SS, WASPB, WASPBG, WASPBSS

Document pockets: WAPPL

Lights kits and accessories: WDL,WKL, LHPC

Feet/support kits: FK SSFK, WAPS, WA_C

Locks and latches: N1C_T series, N1C_TKL series
All N412 series, All WA and WAEK series



PB SERIES 30.5MM PUSHBUTTON

NEMA 12 OPERATOR CONSOLE



Applications

Designed to hold all standard 30.5mm brands of pushbuttons, switches and pilot lights. Provides protection from dirt, dust, oil and water.

Construction

- Bodies and doors fabricated from 14 gauge steel
- Closed cell oil resistant neoprene gasket
- Continuously welded seams ground smooth
- External mounting feet, top and bottom of enclosure
- Captivated cover screws thread into sealed wells
- Standard “4-way” pushbutton holes accept all brands of oil-tight pushbuttons, switches and pilot lights

- Enclosures 9.50”x6.25”x3.09” and larger have internal detachable hinges to hold cover open during wiring, yet permit quick removal
- Grounding provisions provided

Finish

- ANSI-61 gray polyester powder inside and out over phosphatized surfaces

Listings

- UL 508, Types 12 & 13
- UL File E64791
- CSA Certified, Type 12 & 13
- CSA File LL66078
- NEMA/EEMAC Types 12 & 13
- JIC 3L-1-71

Enclosure Shipping Schedule		
Same day	1 - 7 days	1 -10 days
Color indicates shipping lead time in business days.		

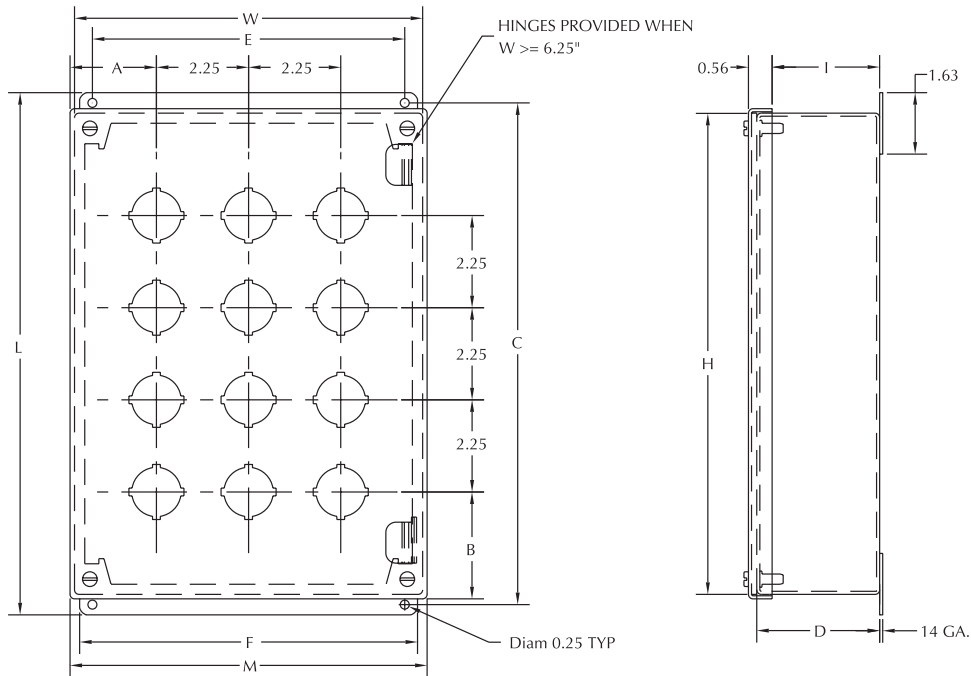


Pushbutton Enclosure	Price	With Blank Cover	Price	Body/Door	Size HxWxD	Mounting CxE	Overall LxM	F	I	A	B
PB1	check	PB1BC	check	14/14	3.5x3.25x2.81 (89x83x71)	4x2.38 (102x60)	4.5x3.56 (114x90)	3.00 (76)	2.41 (61)	1.78 (45)	1.88 (48)
PB2	check	PB2BC	check	14/14	5.75x3.25x2.81 (146x83x71)	6.25x2.38 (159x60)	6.75x3.56 (171x90)	3.00 (76)	2.41 (61)	1.78 (45)	1.88 (48)
PB3	check	PB3BC	check	14/14	8x3.25x2.81 (203x83x71)	8.5x2.38 (216x60)	9x3.56 (229x90)	3.00 (76)	2.41 (61)	1.78 (45)	1.88 (48)
PB4	check	PB4BC	check	14/14	10.25x3.25x2.81 (260x83x71)	10.75x2.38 (273x60)	11.25x3.56 (286x90)	3.00 (76)	2.41 (61)	1.78 (45)	1.88 (48)
PB4S	check	PB4SBC	check	14/14	7.25x6.25x3.09 (184x159x79)	7.75x5.38 (197x137)	8.25x6.56 (210x167)	6.00 (152)	2.69 (68)	2.16 (55)	2.63 (67)
PB5	check	PB5BC	check	14/14	12.5x3.25x2.81 (318x83x71)	13x2.38 (330x60)	13.5x3.56 (343x90)	3.00 (76)	2.41 (61)	1.78 (45)	1.88 (48)
PB6	check	PB6BC	check	14/14	9.5x6.25x3.09 (241x159x79)	10x5.38 (254x137)	10.5x6.56 (267x167)	6.00 (152)	2.69 (68)	2.16 (55)	2.63 (67)
PB6VL	check	PB6VLBC	check	14/14	14.75x3.25x2.81 (375x83x71)	15.25x2.38 (387x60)	15.75x3.56 (400x90)	3.00 (76)	2.41 (61)	1.78 (45)	1.88 (48)
PB8	check	PB8BC	check	14/14	20.25x3.25x2.81 (514x83x71)	20.75x2.38 (527x60)	21.25x3.56 (540x90)	3.00 (76)	2.41 (61)	1.78 (45)	1.88 (48)
PB9	check	PB9BC	check	14/14	9.5x8.5x3.09 (241x216x79)	10x7.63 (254x194)	10.5x8.81 (267x224)	8.25 (210)	2.69 (68)	2.16 (55)	2.63 (67)
PB10	check	PB10BC	check	14/14	24.75x3.25x2.81 (629x83x71)	25.25x2.38 (641x60)	25.75x3.56 (654x90)	3.00 (76)	2.41 (61)	1.78 (45)	1.88 (48)
PB12	check	PB12BC	check	14/14	11.75x8.5x3.09 (298x216x79)	12.25x7.63 (311x194)	12.75x8.81 (324x224)	8.25 (210)	2.69 (68)	2.16 (55)	2.63 (67)
PB16	check	PB16BC	check	14/14	11.75x10.75x3.09 (298x273x79)	12.25x9.88 (311x251)	12.75x11.06 (324x281)	10.50 (267)	2.69 (68)	2.16 (55)	2.63 (67)
PB25	check	PB25BC	check	14/14	14x13x3.09 (356x330x79)	14.5x12.13 (368x308)	15x13.31 (381x338)	12.75 (324)	2.69 (68)	2.16 (55)	2.63 (67)

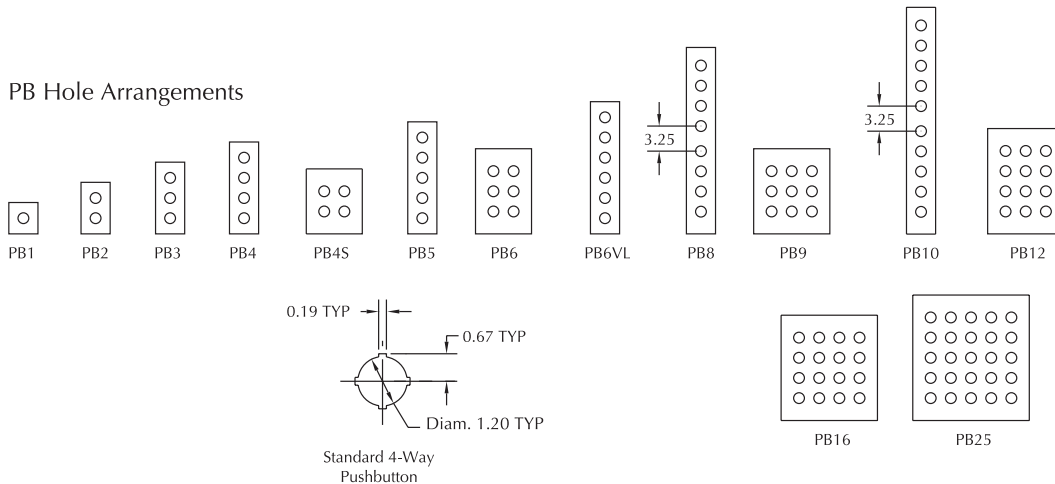
Note: Dimensions in inches (millimeters); letters in table correspond to letters on dimensional drawings.

PB SERIES 30.5MM PUSHBUTTON NEMA 12 OPERATOR CONSOLE

Dimensions



PB Hole Arrangements



ENCLOSURES

NEMA 12 STAINLESS STEEL PUSHBUTTON WALL MOUNT

(30.5MM HOLES)



Application

Designed to hold standard 30.5mm pushbuttons, switches, and pilot lights. Provides protection from dirt, dust, oil and water. Also used in areas where serious corrosion problems exist.

- External mounting plate on top and bottom of enclosure
- Grounding provisions provided
- PBSS Enclosures 9.50 x 6.25 x 3.00 and larger have internal detachable hinges to hold cover open during service, yet permit quick removal

Construction

- Fabricated from 14 gauge 304 stainless steel
- Continuously welded seams ground smooth
- Cover secured by stainless steel captive screws threaded into sealed wells
- Closed cell oil-resistant neoprene gasket
- Standard “4-way” pushbutton holes accept all brands of oil-tight pushbuttons, switches, and pilot lights

Finish

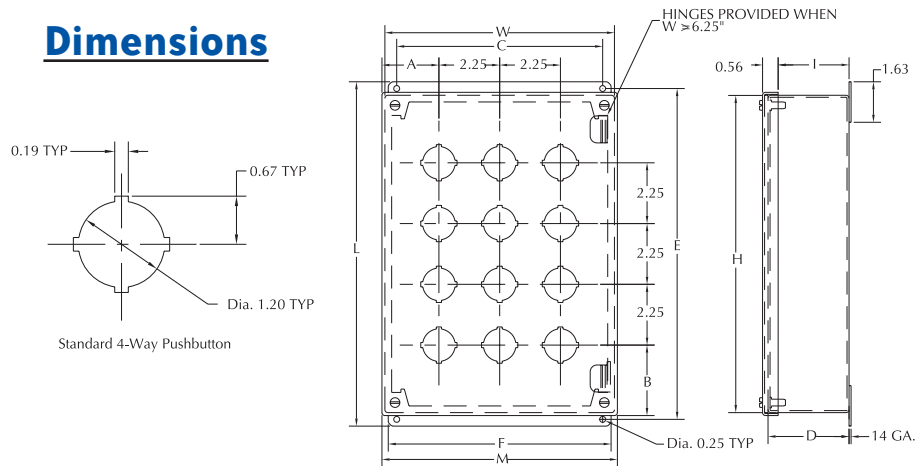
- Stainless steel cover and outside of enclosure have smooth grained finish

Listings

- UL 508, Types 12 and 13 (UL file E64791)
- CSA Certified, Type 12 (CSA file LL66078)
- Meets NEMA/EEMAC Types 12 and 13 requirements
- JIC EL-1-71



Dimensions



Standard 4-Way Pushbutton

Hole Arrangements



Enclosure Shipping Schedule		
Same day	1 - 7 days	1 - 10 days
Color indicates shipping lead time in business days		

Part Number	Price	Body/Door	Enclosure Size HxWxD	Mounting CxE	Overall LxM	F	I	A	B
PBSS1	check	14/14	3.50x3.25x2.81 (89x83x71)	2.38x4 (60x102)	4.50x3.56 (114x90)	3 (76)	2.41 (61)	1.78 (45)	1.88 (48)
PBSS2	check	14/14	5.75x3.25x2.81 (146x83x71)	2.38x6.25 (60x159)	6.75x3.56 (171x90)	3 (76)	2.41 (61)	1.78 (45)	1.88 (48)
PBSS3	check	14/14	8x3.25x2.81 (203x83x71)	2.38x8.50 (60x216)	9x3.56 (229x90)	3 (76)	2.41 (61)	1.78 (45)	1.88 (48)
PBSS4	check	14/14	10.25x3.25x2.81 (260x83x71)	2.38x10.75 (60x273)	11.25x3.56 (286x90)	3 (76)	2.41 (61)	1.78 (45)	1.88 (48)
PBSS6	check	14/14	9.50x6.25x3.09 (241x159x79)	5.38x10.00 (137x254)	10.50x6.56 (267x167)	6 (152)	2.69 (68)	2.16 (55)	2.63 (67)
PBSS9	check	14/14	9.50x8.50x3.09 (241x216x79)	7.63x10.00 (194x254)	10.50x8.81 (267x224)	8.25 (210)	2.69 (68)	2.16 (55)	2.63 (67)
PBSS12	check	14/14	11.75x8.50x3.09 (298x216x79)	7.63x12.25 (194x311)	12.75x8.81 (324x224)	8.25 (210)	2.69 (68)	2.16 (55)	2.63 (67)

Note: Dimensions in inches (millimeters); letters in table correspond to letters on dimensional drawings.

PSL SERIES 30.5MM PUSHBUTTON

NEMA 12 OPERATOR CONSOLE



Applications

Designed to hold all standard 30.5mm brands of pushbuttons, switches and pilot lights. Provides protection from dirt, dust, oil and water. This slimline model is designed for conditions where enclosures must fit within very limited areas.

- Standard “4-way” pushbutton holes accept all brands of oil-tight pushbuttons, switches and pilot lights
- Grounding provisions provided

Finish

- ANSI-61 gray polyester powder inside and out over phosphatized surfaces

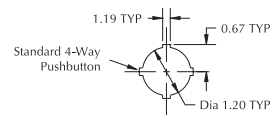
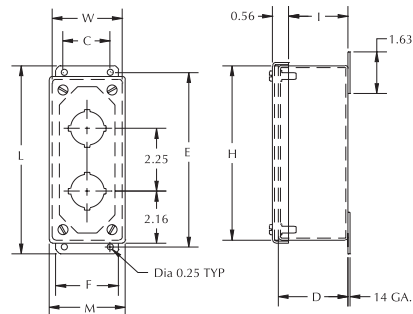
Construction

- Fabricated from 14 gauge steel
- Closed cell oil-resistant neoprene gasket
- Continuously welded seams ground smooth
- External mounting feet, top and bottom of enclosure
- Captivated cover screws thread into sealed wells

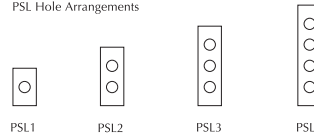
Listings

- UL 508, Types 12 & 13
- UL File E64791
- CSA Certified, Type 12 & 13
- CSA File LL66078
- NEMA/EEMAC Types 12 & 13
- JIC EL-1-71

Dimensions



PSL Hole Arrangements



Enclosure Shipping Schedule		
Same day	1 - 7 days	1 -10 days
Color indicates shipping lead time in business days.		

Part Number	Price	Body/Door	Size HxWxD	Mounting CxE	Overall LxM	F	I
PSL1	check	14/14	4x2.5x2.5 (102x64x64)	1.63x4.5 (41x114)	5x2.81 (127x71)	2.25 (57)	2.09 (53)
PSL2	check	14/14	6.25x2.5x2.5 (159x64x64)	1.63x6.75 (41x171)	7.25x2.81 (184x71)	2.25 (57)	2.09 (53)
PSL3	check	14/14	8.5x2.5x2.5 (216x64x64)	1.63x9 (41x229)	9.5x2.81 (241x71)	2.25 (57)	2.09 (53)
PSL4	check	14/14	10.75x2.5x2.5 (273x64x64)	1.63x11.25 (41x286)	11.75x2.81 (298x71)	2.25 (57)	2.09 (53)

Note: Dimensions in inches (millimeters); letters in table correspond to letters on dimensional drawings.

ENCLOSURES

PBGX SERIES 22.5MM PUSHBUTTON

NEMA 12 OPERATOR CONSOLE



Applications

Designed to hold all standard 22.5mm brands of miniature oil-tight pushbuttons, switches and pilot lights. Provide protection from dirt, dust, oil and water.

Construction

- Fabricated from 14 gauge steel
- Closed cell oil-resistant neoprene gasket
- Continuously welded seams ground smooth
- External mounting feet, top and bottom of enclosure
- Captivated cover screws thread into sealed wells
- Standard “4-way” miniature pushbutton holes accept all brands of oil-tight push-buttons, switches and pilot lights

- Enclosures 8.50”x5.00”x4.25” and larger have internal detachable hinges to hold cover open during wiring, yet permit quick removal
- Grounding provisions provided

Finish

- ANSI-61 gray polyester powder inside and out over phosphatized surfaces

Listings

- UL 508, Types 12 & 13
- UL File E64791
- CSA Certified, Type 12 & 13
- CSA File LL66078
- NEMA/EEMAC Types 12 & 13
- JIC EL-1-71



Enclosure Shipping Schedule		
Same day	1 - 7 days	1 -10 days

Color indicates shipping lead time in business days.

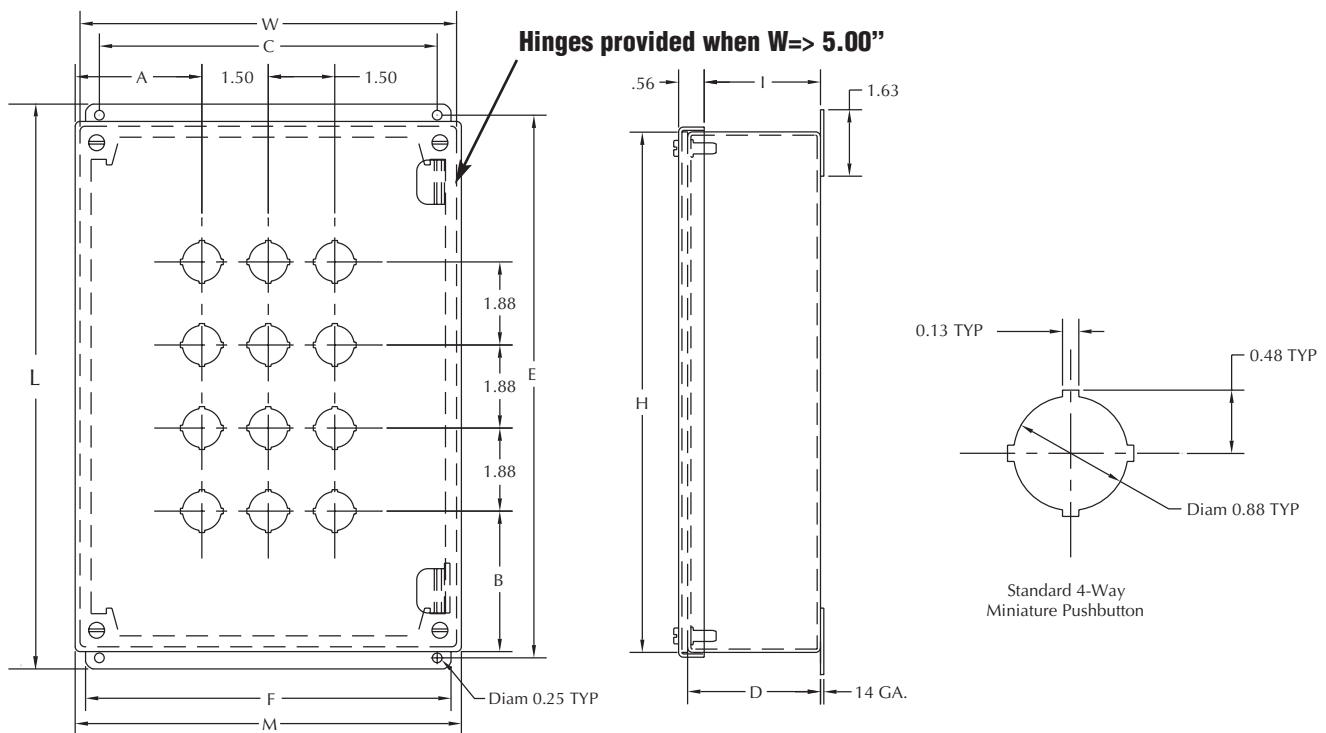
Part Number	Price	Body/Door	Size HxWxD	Mounting CxE	Overall LxM	F	I	A	B
PBGX1	check	14/14	3.25X2.75x3.50 (83x70x89)	1.88x3.75 (48x95)	4.25x3.06 (108x78)	2.5 (64)	3.09 (79)	1.53 (39)	1.78 (45)
PBGX2	check	14/14	5.13x2.75x3.50 (130x70x89)	1.88x5.63 (48x143)	6.13x3.06 (156x78)	2.5 (64)	3.09 (79)	1.53 (39)	1.78 (45)
PBGX3	check	14/14	7.00x2.75x3.50 (178x70x89)	1.88x7.50 (48x191)	8.00x3.06 (203x78)	2.5 (64)	3.09 (79)	1.53 (39)	1.78 (45)
PBGX4	check	14/14	8.88x2.75x3.5 (225x70x89)	1.88x9.38 (48x238)	9.88x3.06 (251x78)	2.5 (64)	3.09 (79)	1.53 (39)	1.78 (45)
PBGX6	check	14/14	8.5x5x4.25 (216x127x108)	4.13x9 (105x229)	9.50x5.31 (241x135)	4.75 (121)	3.84 (98)	1.91 (48)	2.53 (64)
PBGX9	check	14/14	8.5x6.5x4.25 (216x165x108)	5.63x9 (143x229)	9.50x6.81 (241x173)	6.25 (159)	3.84 (98)	1.91 (48)	2.53 (64)
PBGX12	check	14/14	10.38x6.5x4.25 (264x165x108)	5.63x10.88 (143x276)	11.38x6.81 (289x173)	6.25 (159)	3.84 (98)	1.91 (48)	2.53 (64)
PBGX20	check	14/14	12.25x8x4.25 (311x203x108)	7.13x12.75 (181x324)	13.25x8.31 (337x211)	7.75 (197)	3.84 (98)	1.91 (48)	2.53 (64)
PBGX25	check	14/14	12.25x9.5x4.25 (311x241x108)	8.63x12.75 (219x324)	13.25x9.81 (337x249)	9.25 (235)	3.84 (98)	1.91 (48)	2.53 (64)

Note: Dimensions in inches (millimeters); letters in table correspond to letters on dimensional drawings.

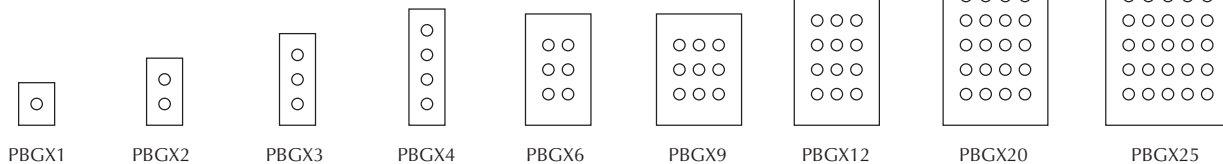
PBGX SERIES 22.5MM PUSHBUTTON

NEMA 12 OPERATOR CONSOLE

Dimensions



PBGX Hole Arrangements



PBXD SERIES 30.5MM PUSHBUTTON

NEMA 12 OPERATOR CONSOLE



Applications

Designed to hold 30.5mm oil-tight pushbuttons, switches and pilot lights. Provides protection from dirt, dust, oil and water. Extra deep design accommodates additional contact blocks for push-buttons.

Construction

- Bodies and doors fabricated from 14 gauge steel
- Closed cell oil-resistant neoprene gasket
- Continuously welded seams ground smooth
- External mounting feet, top and bottom of enclosure
- Captivated cover screws thread into sealed wells

- Standard “4-way” pushbutton holes accept all brands of oil-tight pushbuttons, switches and pilot lights
- Enclosures 7.25x6.25x4.81 and larger have internal detachable hinges to hold cover open during wiring, yet permit quick removal
- Grounding provisions provided

Finish

- ANSI-61 gray polyester powder inside and out over phosphatized surfaces

Listings

- UL 508, Types 12 & 13
- UL File E64791
- CSA Certified, Type 12 & 13
- CSA File LL66078
- NEMA/EEMAC Types 12 & 13
- JIC-EL-1-71

Enclosure Shipping Schedule		
Same day	1 - 7 days	1 -10 days
Color indicates shipping lead time in business days.		

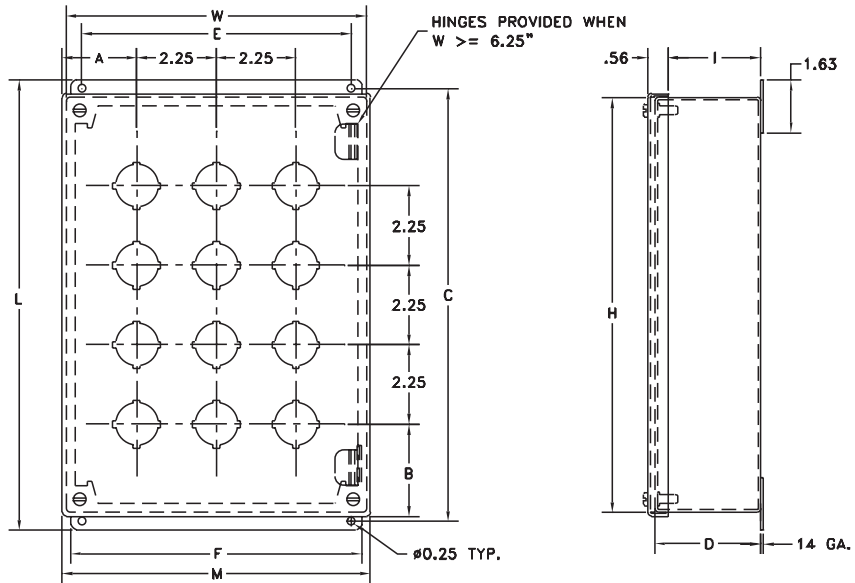
Part Number	Price	Body/Door	Size HxWxD	Mounting ExC	Overall LxM	F	I	A	B
PBXD1	check	14/14	4x4x4.81 (102x102x122)	3.13x4.5 (79x114)	5x4.31 (127x110)	3.75 (95)	4.41 (112)	2.19 (56)	2.16 (55)
PBXD2	check	14/14	6x4x4.81 (152x102x122)	3.13x6.5 (79x165)	7x4.31 (178x110)	3.75 (95)	4.41 (112)	2.19 (56)	2.03 (52)
PBXD3	check	14/14	8x4x4.81 (203x102x122)	3.13x8.5 (79x216)	9x4.31 (229x110)	3.75 (95)	4.41 (112)	2.19 (56)	1.97 (50)
PBXD4	check	14/14	10x4x4.81 (254x102x122)	3.13x10.5 (79x267)	11x4.31 (279x110)	3.75 (95)	4.41 (112)	2.19 (56)	1.78 (45)
PBXD4S	check	14/14	7.25x6.25x4.81 (184x159x122)	5.38x7.75 (137x197)	8.25x6.56 (210x167)	6.00 (152)	4.41 (112)	2.19 (56)	1.66 (42)
PBXD6	check	14/14	9.5x6.25x4.81 (241x159x122)	5.38x10 (137x254)	10.5x6.56 (267x167)	6.00 (152)	4.41 (112)	2.19 (56)	2.66 (67)
PBXD9	check	14/14	9.5x8.5x4.81 (241x216x122)	7.63x10 (194x254)	10.5x8.81 (267x224)	8.25 (210)	4.41 (112)	2.19 (56)	2.66 (67)
PBXD10	check	14/14	14x6.25x4.81 (356x159x122)	5.38x14.5 (137x368)	15x6.56 (381x167)	6.00 (152)	4.41 (112)	2.19 (56)	2.66 (67)
PBXD12	check	14/14	11.75x8.5x4.81 (298x216x122)	7.63x12.25 (194x311)	12.75x8.81 (324x224)	8.25 (210)	4.41 (112)	2.19 (56)	2.66 (67)
PBXD16	check	14/14	11.75x10.75x4.81 (298x273x122)	9.88x12.25 (251x311)	12.75x11.06 (324x281)	10.5 (267)	4.41 (112)	2.19 (56)	2.66 (67)
PBXD16V	check	14/14	20.75x6.25x4.81 (527x159x122)	5.38x21.25 (137x540)	21.75x6.56 (552x167)	6.00 (152)	4.41 (112)	2.19 (56)	2.66 (67)
PBXD20	check	14/14	14x10.75x4.81 (356x273x122)	9.88x14.50 (251x368)	15x11.06 (381x281)	10.5 (267)	4.41 (112)	2.19 (56)	2.66 (67)
PBXD25	check	14/14	14x13x4.81 (356x330x122)	12.13x14.50 (308x368)	15x13.31 (381x338)	12.75 (324)	4.41 (112)	2.19 (56)	2.66 (67)

Note: Dimensions in inches (millimeters); letters in table correspond to letters on dimensional drawings.

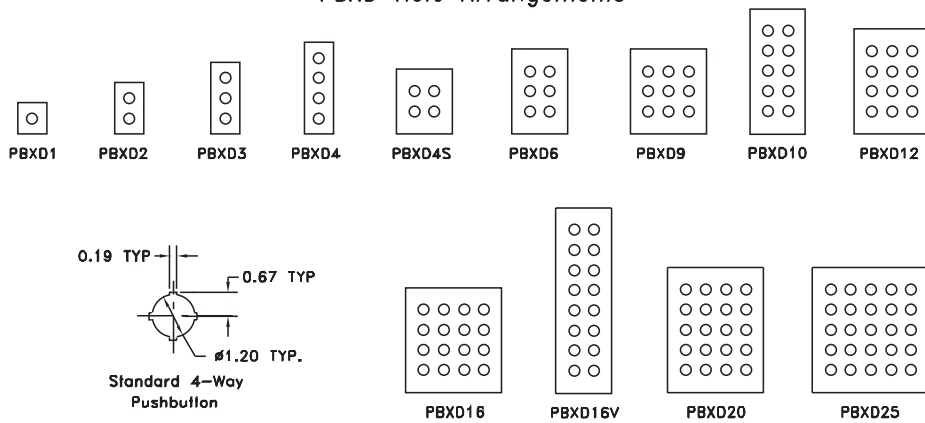
PBXD SERIES 30.5MM PUSHBUTTON

NEMA 12 OPERATOR CONSOLE

Dimensions



PBXD Hole Arrangements



ENCLOSURES

PBYX SERIES 30.5MM PUSHBUTTON NEMA 12 OPERATOR CONSOLE



Applications

Designed to hold 30.5mm oil-tight pushbuttons, switches and pilot lights with extra size to allow 2.5" between centers of pushbutton holes. Provides protection from dirt, dust, oil and water.

Construction

- Fabricated from 14 gauge steel
- Closed cell oil-resistant neoprene gasket
- Continuously welded seams ground smooth
- Cover held in place by continuous hinge
- Subpanel included with enclosure
- External mounting feet, top and bottom of enclosure
- Captivated cover screws thread into sealed wells

- Standard "4-way" pushbutton holes accept all brands of oil-tight pushbuttons, switches and pilot lights
- Grounding provisions provided

Finish

- ANSI-61 gray polyester powder inside and out over phosphatized surfaces
- Included subpanels are white polyester powder over phosphatized surfaces

Listings

- UL 508, Types 12 & 13
- UL File E64791
- CSA Certified, Type 12 & 13
- CSA File LL66078
- NEMA/EEMAC Types 12 & 13
- JIC EL-1-71

Enclosure Shipping Schedule		
Same day	1 - 7 days	1 -10 days

Color indicates shipping lead time in business days.

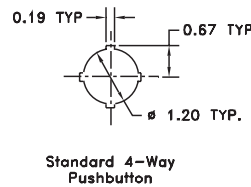
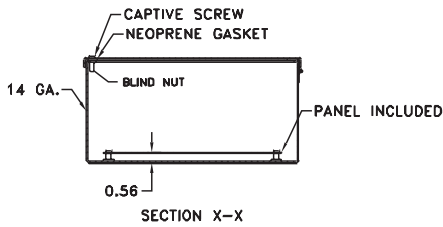
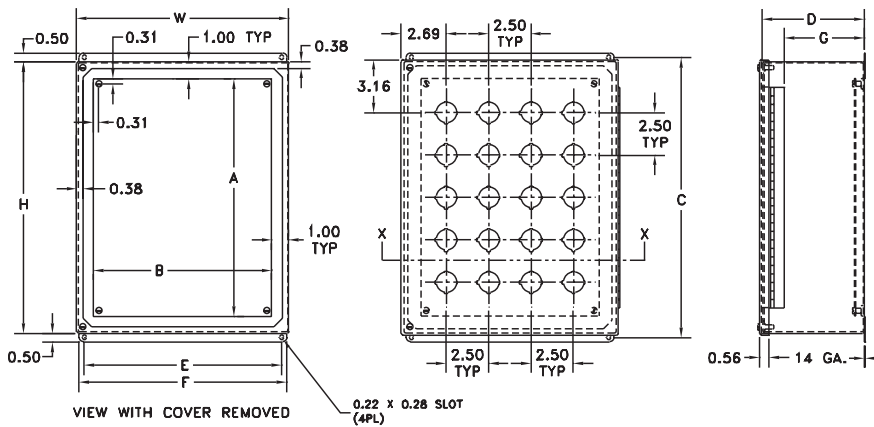
Part Number	Price	Body/Door	Size HxWxD	Mounting CxE	Subpanel AxB	F	G
PBYX4S	check	14 /14	8.5x7.5x6 (216x191x152)	9x6.5 (229x165)	6.5x5.5 (165x140)	7.25 (184)	4.78 (121)
PBYX6	check	14 /14	11x7.5x6 (279x191x152)	11.5x6.5 (292x165)	9x5.5 (229x140)	7.25 (184)	4.78 (121)
PBYX9	check	14 /14	11x10x6 (279x254x152)	11.5x9 (292x229)	9x8 (229x203)	9.75 (248)	4.78 (121)
PBYX12	check	14 /14	13.5x10x6 (343x254x152)	14x9 (356x229)	11.5x8 (292x203)	9.75 (248)	4.78 (121)
PBYX16	check	14 /14	13.5x12.5x6 (343x318x152)	14x11.5 (356x292)	11.5x10.5 (292x267)	12.25 (311)	4.78 (121)
PBYX20	check	14 /14	16x12.5x6 (406x318x152)	16.5x11.5 (419x292)	14x10.5 (356x267)	12.25 (311)	4.78 (121)
PBYX25	check	14 /14	16x15x6 (406x381x152)	16.5x14 (419x356)	14x13 (356x330)	14.75 (375)	4.78 (121)
PBYX30	check	14 /14	18.5x15x6 (470x381x152)	19x14 (483x356)	16.5x13 (419x330)	14.75 (375)	4.78 (121)
PBYX36	check	14 /14	18.5x17.5x6 (470x445x152)	19x16.5 (483x419)	16.5x15.5 (419x394)	17.25 (438)	4.78 (121)
PBYX42	check	14 /14	21x17.5x6 (533x445x152)	21.5x16.5 (546x419)	19x15.5 (483x394)	17.25 (438)	4.78 (121)

Note: Dimensions in inches (millimeters); letters in table correspond to letters on dimensional drawings.

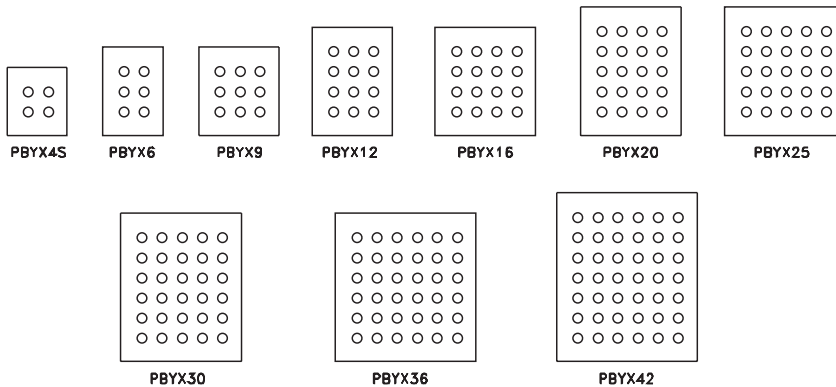
PBYX SERIES 30.5MM PUSHBUTTON

NEMA 12 OPERATOR CONSOLE

Dimensions



PBYX Hole Arrangements



WPBA SERIES SLOPING 30.5MM PUSHBUTTON NEMA 12 OPERATOR CONSOLE



Applications

Designed for use where slanted control surfaces are wanted. Enclosures may be mounted in a variety of ways to meet specific requirements. Receives standard 30.5mm oil-tight pushbuttons, switches and pilot lights. Provides protection from dirt, dust, oil and water.

Construction

- Fabricated from 14 gauge steel
- Closed cell oil- resistant neoprene gasket
- Continuously welded seams ground smooth
- External mounting feet, top and bottom of enclosure
- Captivated cover screws thread into sealed wells

- Standard “4-way” pushbutton holes accept all brands of oil-tight pushbuttons, switches and pilot lights
- Enclosures 7.25”x6.25”x6.75” and larger have internal detachable hinges to hold cover open during wiring, yet permit quick removal
- Grounding provisions provided

Finish

- ANSI-61 gray polyester powder inside and out over phosphatized surfaces

Listings

- UL 508, Types 12 & 13
- UL File E64791
- CSA Certified, Type 12 & 13
- CSA File LL66078
- NEMA/EEMAC Types 12 & 13
- JIC EL-1-71



Enclosure Shipping Schedule

Same day	1 - 7 days	1 - 10 days
----------	------------	-------------

Color indicates shipping lead time in business

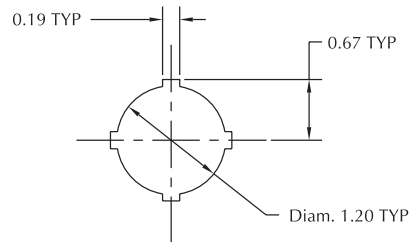
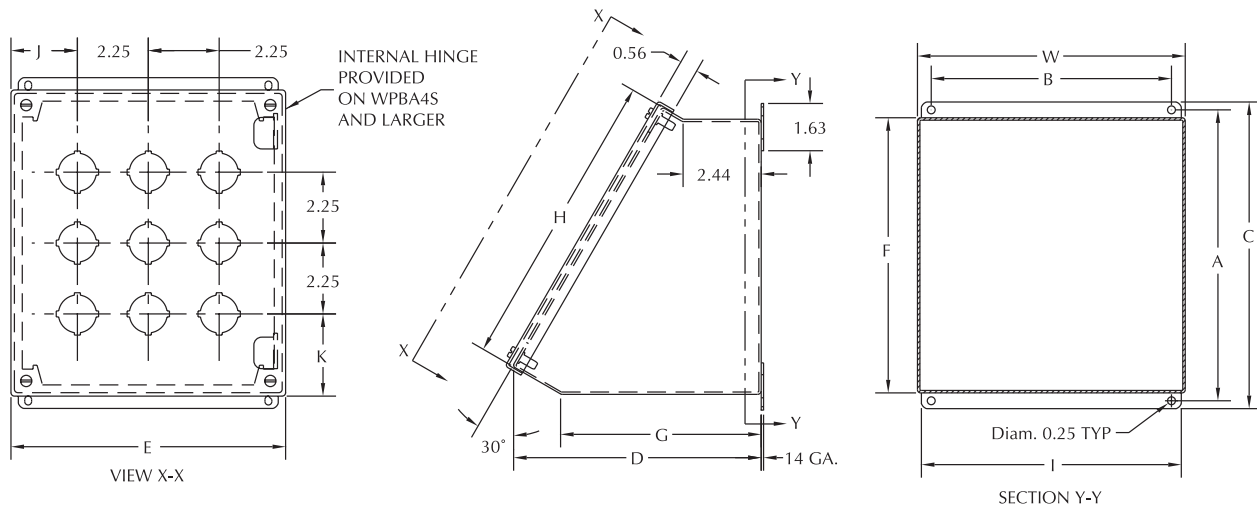
Part Number	Price	Body/Door	Size HxWxD	Mounting AxB	Overall CxE	F	G	I	J	K
WPBA1	check	14 /14	3.50x3.25x4.78 (89x83x121)	4.03x2.38 (102x60)	4.53x3.56 (115x90)	3.53 (90)	3.31 (84)	3.00 (76)	1.78 (45)	1.88 (48)
WPBA2	check	14 /14	3.50x5.50x4.78 (89x140x121)	4.03x4.63 (102x117)	4.53x5.81(115x148)	3.53 (90)	3.31 (84)	5.25 (133)	1.78 (45)	1.88 (48)
WPBA3	check	14 /14	3.50x7.75x4.78 (89x197x121)	4.03x6.88 (102x175)	4.53x8.06 (115x205)	3.53 (90)	3.31 (84)	7.50 (191)	1.78 (45)	1.88 (48)
WPBA4	check	14 /14	3.50x10x4.78 (89x254x121)	4.03x9.13 (102x232)	4.53x10.31 (115x262)	3.53 (90)	3.31 (84)	9.75 (248)	1.78 (45)	1.88 (48)
WPBA4S	check	14 /14	7.25x6.25x6.66 (184x159x169)	7.28x5.38 (185x137)	7.78x6.56 (198x167)	6.78 (172)	5.19 (132)	6.00 (152)	2.16 (55)	2.63 (67)
WPBA6	check	14 /14	7.25x8.5x6.66 (184x216x169)	7.28x7.63 (185x194)	7.78x8.81 (198x224)	6.78 (172)	5.19 (132)	8.25 (210)	2.16 (55)	2.63 (67)
WPBA8	check	14 /14	7.25x10.75x6.66 (184x273x169)	7.28x9.88 (185x251)	7.78x11.06 (198x281)	6.78 (172)	5.19 (132)	10.5 (267)	2.16 (55)	2.63 (67)
WPBA9	check	14 /14	9.5x8.5x7.78 (241x216x198)	9.25x7.63 (235x194)	9.75x8.81 (248x224)	8.75 (222)	6.31 (160)	8.25 (210)	2.16 (55)	2.63 (67)
WPBA10	check	14 /14	7.25x13x6.66 (184x330x169)	7.28x12.13 (185x308)	7.78x13.31 (198x338)	6.78 (172)	5.19 (132)	12.75 (324)	2.16 (55)	2.63 (67)
WPBA12	check	14 /14	7.25x15.25x6.66 (184x387x169)	7.28x14.38 (185x365)	7.78x15.56 (198x395)	6.78 (172)	5.19 (132)	15.00 (381)	2.16 (55)	2.63 (67)
WPBA12S	check	14 /14	11.75x8.5x8.91 (298x216x226)	11.19x7.63 (284x194)	11.69x8.81 (297x224)	10.69 (271)	7.44 (189)	8.25 (210)	2.16 (55)	2.63 (67)
WPBA16	check	14 /14	7.25x19.75x6.66 (184x502x169)	7.28x18.88 (185x479)	7.78x20.06 (198x510)	6.78 (172)	5.19 (132)	19.50 (495)	2.16 (55)	2.63 (67)
WPBA16S	check	14 /14	11.75x10.75x8.91 (298x273x226)	11.19x9.88 (284x251)	11.69x11.06 (297x281)	10.69 (271)	7.44 (189)	10.50 (267)	2.16 (55)	2.63 (67)
WPBA20	check	14 /14	11.75x13x8.91 (298x330x226)	11.19x12.13 (284x308)	11.69x13.31(297x338)	10.69 (271)	7.44 (189)	12.75 (324)	2.16 (55)	2.63 (67)
WPBA25	check	14 /14	14x13x10.03 (356x330x255)	13.13x12.13 (333x308)	13.63x13.31 (346x338)	12.63 (321)	8.56 (217)	12.75 (324)	2.16 (55)	2.63 (67)
WPBA30	check	14 /14	14x15.25x10.03 (356x387x255)	13.13x14.38 (333x365)	13.63x15.56 (346x395)	12.63 (321)	8.56 (217)	15.00 (381)	2.16 (55)	2.63 (67)

Note: Dimensions in inches (millimeters); letters in table correspond to letters on dimensional drawings.

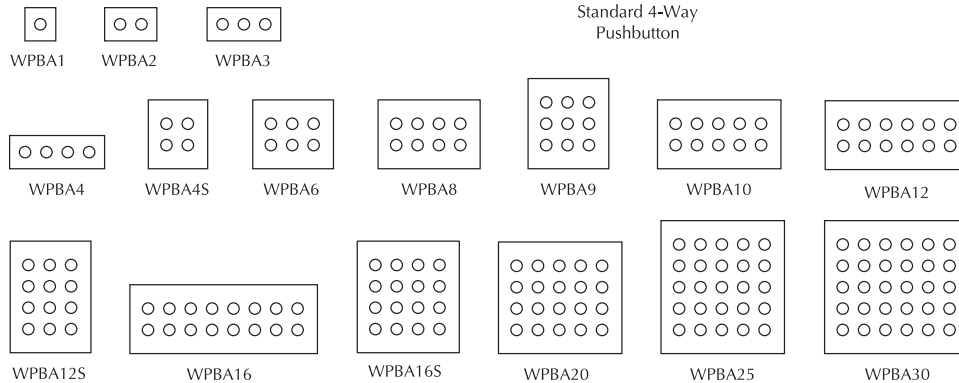
WPBA SERIES SLOPING 30.5MM PUSHBUTTON

NEMA 12 OPERATOR CONSOLE

Dimensions



WPBA Hole Arrangements



W1C NEMA 12 OPERATOR CONSOLES



Applications

Designed to house electrical and electronic controls and instruments. Pushbuttons, pilot lights, meters, switches, etc. can be mounted on sloping control surfaces. Interior components can be mounted on standard subpanel. Heavy duty construction provides protection from dirt, dust, oil and water.

Construction

- Bodies and doors fabricated from 14 gauge steel
- Continuously welded seams ground smooth, without knockouts, holes or cutouts
- 3-point keylocking handle is provided on front, main door
- Main door on console is raised
- Control panels are hinged along bottom edge
- Controls panels, access panels and instrument panels have captivated screws that thread into sealed wells
- Door stops provided to hold control panel open
- Print pocket is provided
- Closed cell neoprene gasket
- Removable subpanel included with enclosure
- Grounding provisions provided

Finish

- ANSI-61 gray polyester powder inside and out over phosphatized surfaces
- Included subpanel is white polyester powder over phosphatized surfaces

Listings

- UL 508, Types 12 and 13
- UL File E64791
- CSA Certified, Type 12 & 13
- CSA File LL66078
- NEMA/EEMAC Types 12 and 13

Enclosure Shipping Schedule

Same day	1 - 7 days	1 -10 days
----------	------------	------------

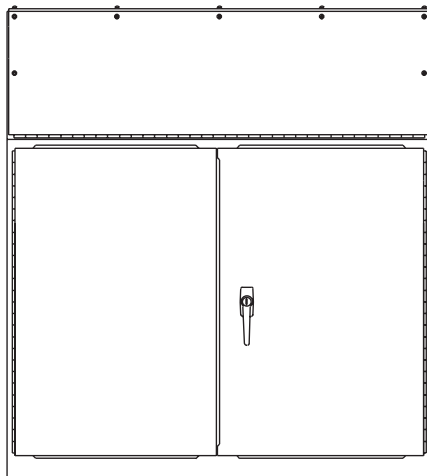
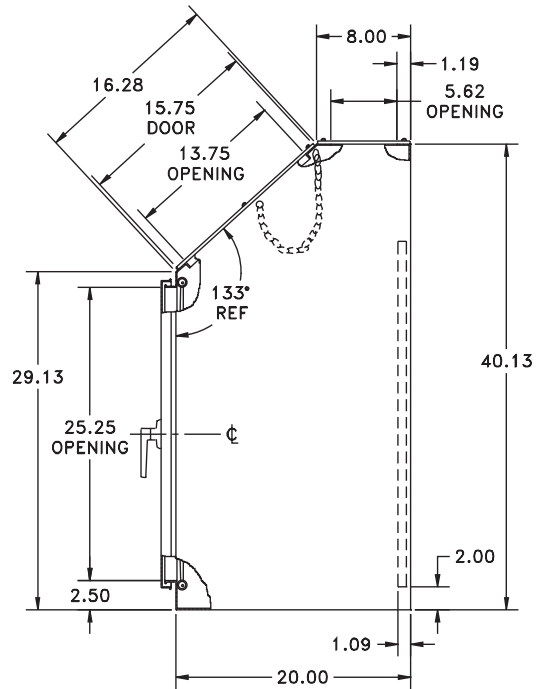
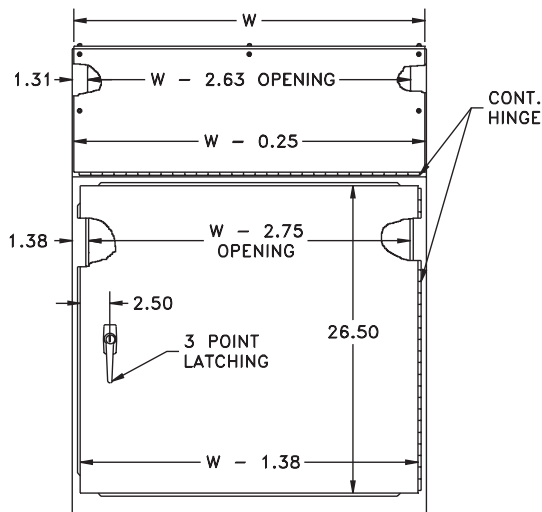
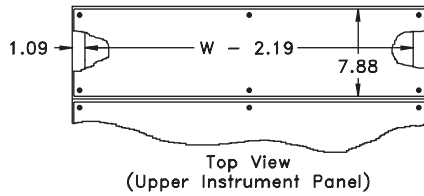
Color indicates shipping lead time in business days.

Console Part Number	Price	Body/Door	Enclosure Size HxWxD	Subpanel Size AxB*
W1C24	check	14 /14	40x24x20 (1016x610x508)	30x21 (762x533)
W1C30	check	14 /14	40x30x20 (1016x762x508)	30x27 (762x686)
W1C36	check	14 /14	40x36x20 (1016x914x508)	30x33 (762x838)
W1C42**	check	14 /14	40x42x20 (1016x1067x508)	30x39 (762x991)
W1C48**	check	14 /14	40x48x20 (1016x1219x508)	30x45 (762x1143)

Notes: Dimensions in inches (millimeters); letters in table correspond to letters on dimensional drawings. *Subpanel included with enclosure. ** Two door units.

W1C NEMA 12 OPERATOR CONSOLES

Dimensions



View Showing
Two Door Console

Notes:

1. One 8X10 Print Pocket is provided.
2. 3-point key-locking handles are provided on main doors.
3. Rear panel included.

ENCLOSURES

WC9 NEMA 12 OPERATOR CONSOLES



Applications

Designed to house electrical and electronic controls, instruments and components. Heavy duty construction provides protection from dirt, dust, oil and water. Sloping front control panel provides an ideal surface for mounting pushbuttons, pilot lights, meters and switches. Interior components can be mounted on panels located on the sides and back of the enclosure. (Subpanels are optional.)

Construction

- Bodies and doors fabricated from 14 gauge steel
- Continuously welded seams ground smooth, without knockouts or holes
- Control panel attached with continuous hinge along bottom edge and secured with captive screws, threaded into sealed wells
- Door stops provided to hold control panel open
- Print pocket is provided
- Closed cell neoprene gasket
- Collar studs provided for mounting one, two or three optional panels
- Grounding provisions provided
- 3-point keylocking handle is provided on the front access door

Finish

- ANSI-61 gray polyester powder inside and out over phosphatized surfaces
- Optional side and back panels are white polyester powder over phosphatized surfaces
- Optional castor kits can be used on any enclosure to provide mobility.
- Castor kit includes two swivel casters and two stationary casters along with all necessary hardware

Listings

- UL 508, Types 12 & 13
- UL File E64791
- CSA Certified, Type 12 & 13
- CSA File LL66078
- NEMA/EEMAC Types 12 & 13

Enclosure Shipping Schedule

Same day	1 - 7 days	1 -10 days
----------	------------	------------

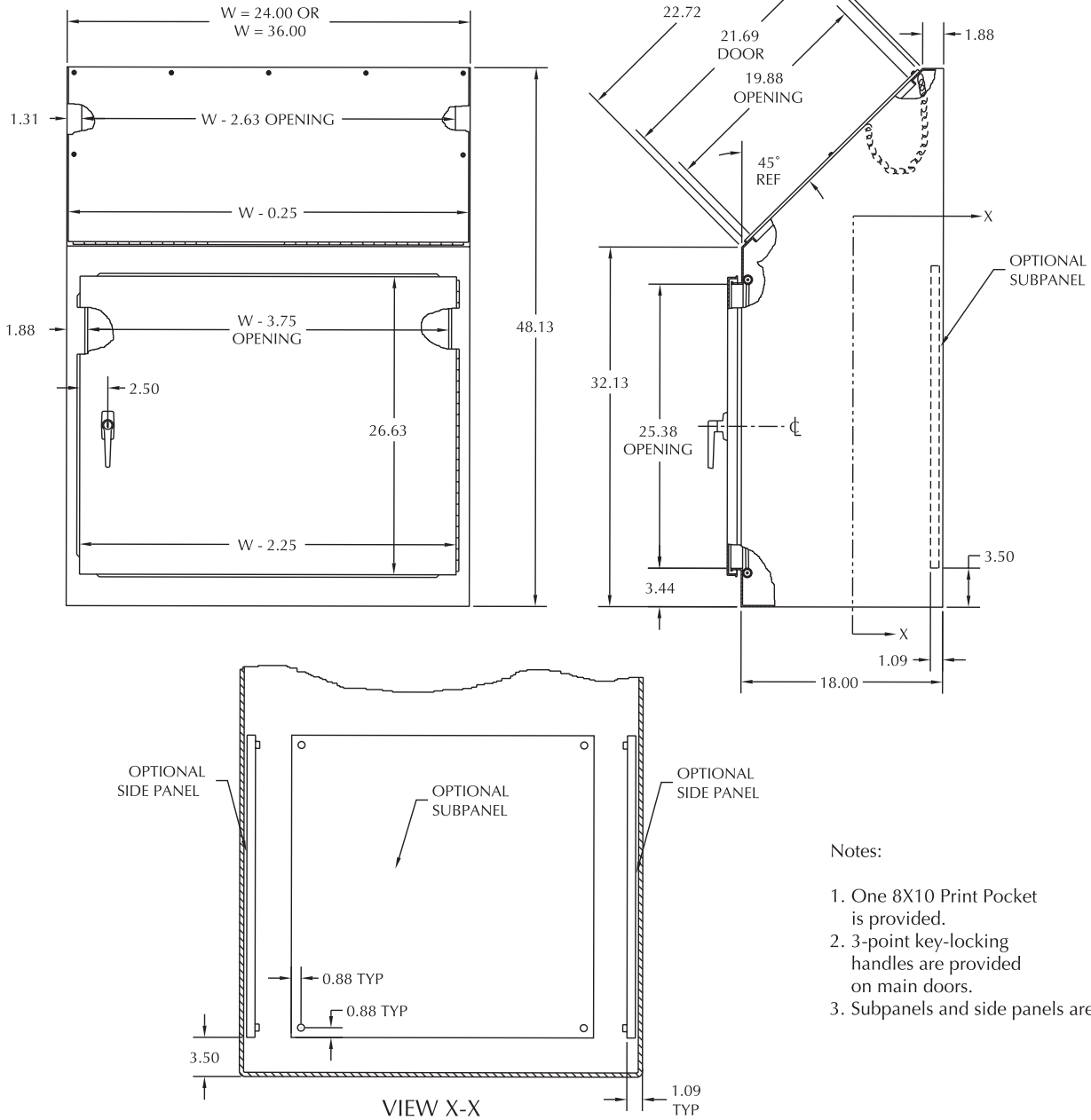
Color indicates shipping lead time in business days.

Part Number	Price	Body/Door	Console Size	Subpanel P/N*	Price	Subpanel Size HxW	Side Panel P/N*	Price	Side Panel Size HxW	Caster Kit P/N*	Price
WC924B	check	14/14	Console body 24" (610) wide	NP3020	check	27x17 (688x432)	NP3020	check	27x17 (686x432)	WC10C	check
WC936B	check	14/14	Console body 36" (914) wide	NP3030	check	27x27 (686x686)	NP3020	check	27x17 (686x432)	WC10C	check

Notes: Dimensions in inches (millimeters); letters in table correspond to letters on dimensional drawings.. * Subpanels, side panels and caster kits must be ordered separately.

WC9 NEMA 12 OPERATOR CONSOLES

Dimensions



Notes:

1. One 8X10 Print Pocket is provided.
2. 3-point key-locking handles are provided on main doors.
3. Subpanels and side panels are optional.



WC10 NEMA 12 OPERATOR CONSOLES



Applications

Designed to hold electrical and electronic controls and instruments. Heavy duty construction provides protection from dirt, dust, oil and water. Pushbuttons, pilot lights, meters, switches, etc. can be mounted on sloping control surfaces. Interior components can be mounted on subpanel and terminal straps.

Construction

Body

- Fabricated from 14 gauge steel
- Seams are continuously welded and ground smooth
- 3-point keylocking handle is provided on front, main door
- Flush main door
- Control panels are hinged along bottom edge
- Control panels have captivated screws threaded into sealed wells
- Door stops provided to hold control panel open
- Print pocket is provided
- Standard closed cell neoprene gasket
- Removable subpanel is included with enclosure
- Grounding provisions provided

Top

- Fabricated from 14 gauge steel
- Seams are continuously welded and ground smooth
- Instrument and access panels have captivated screws that thread into sealed wells
- Closed cell neoprene gasket

Writing desk

- Fabricated from 14-gauge steel
- Seams are continuously welded and ground smooth
- Desks are removable and attach easily to console front

Finish

- ANSI-61 gray polyester powder inside and out over phosphatized surfaces
- Included subpanel is white polyester powder over phosphatized surfaces

Listings

- UL 508, Types 12 and 13
- UL File E64791
- CSA Certified, Type 12 & 13
- CSA File LL66078
- NEMA/EEMAC Types 12 & 13

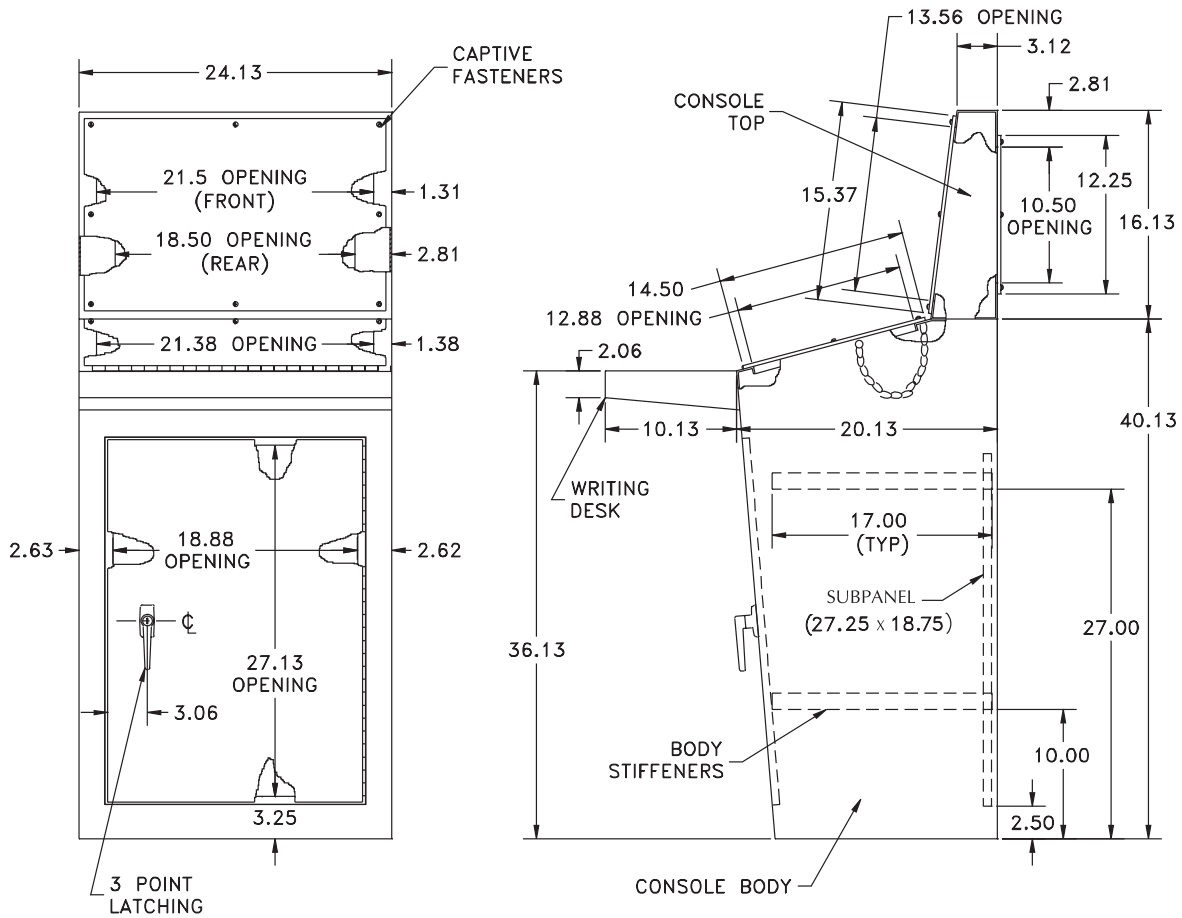
Enclosure Shipping Schedule		
Same day	1 - 7 days	1 -10 days
Color indicates shipping lead time in business days.		

Part Number	Price	Body/Door	Description
WC10B*	check	14/14	Console body only, 24" (610) wide
WC10T	check	14/14	Top for WC10B
WC10W	check	14/14	Writing desk for WC10B
WC10C	check	14/14	Caster kit: Set of 4 castors, 2 mounting plate and hardware

Note Dimensions in inches (millimeters); letters in table correspond to letters on dimensional drawings.* UL Listed. Subpanels are included with console. Note: Tops, writing desks and caster kits must be ordered separately.

WC10 NEMA 12 OPERATOR CONSOLES

Dimensions



Notes:

1. Access doors open 180 degrees.
2. One 8"x10" Print Pocket is provided.
3. 3-point key-locking handles are provided on main doors.
4. Writing desk is provided with mounting hardware.
5. 27.25 x 18.75 subpanel included.

WC12 NEMA 12 OPERATOR CONSOLES



Applications

Designed to hold electrical and electronic controls and instruments. Pushbuttons, pilot lights, meters, switches, etc. can be mounted on sloping control surfaces. Interior components can be mounted on subpanel and terminal straps. Heavy duty construction provides protection from dirt, dust, oil and water.

Construction

Body

- Bodies and doors fabricated from 14 gauge steel
- Seams are continuously welded and ground smooth
- 3-point keylocking handle is provided on front main door
- Double overlapping doors are provided on two door consoles
- Main hinged doors are flush
- Large sloping control panels are hinged along bottom edge
- Control panels have captivated screws threaded into sealed wells
- Door stops provided to hold control panel open
- Print pocket is provided
- Closed cell neoprene gasket
- Removable subpanel is included with console
- Grounding provisions provided
- Studs are welded to inside of console for mounting subpanel
- An inclined body rail is welded to each side of 24" wide and 36" wide consoles for support of terminal straps



Top

- Fabricated from 14 gauge steel
- Top has a sloped front surface
- 4 holes are provided in bottom of top for mounting to body
- Seams are continuously welded and ground smooth
- Instrument and access panels have captivated screws which thread into sealed wells
- Closed cell neoprene gasket
- Instrument panels and access panels are removable

Writing desk

- Fabricated from 14-gauge steel
- Seams are continuously welded and ground smooth
- Desks are removable and attach easily to console front

Finish

- ANSI-61 gray polyester powder inside and out over phosphatized surfaces
- Included subpanel is white polyester powder over phosphatized surfaces

Listings

- UL 508, Types 12 & 13
- UL File E64791
- CSA Certified, Type 12 & 13
- CSA File LL66078
- NEMA/EEMAC Types 12 & 13

Enclosure Shipping Schedule		
Same day	1 - 7 days	1 -10 days
Color indicates shipping lead time in business days.		

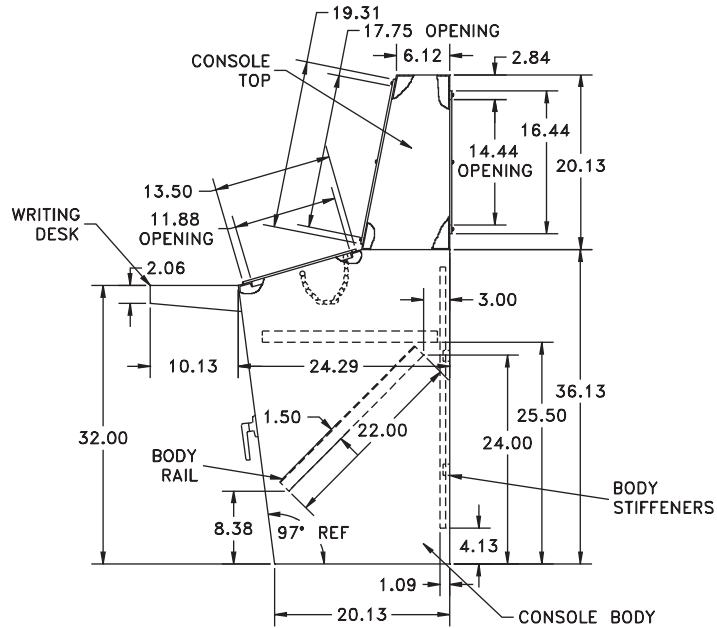
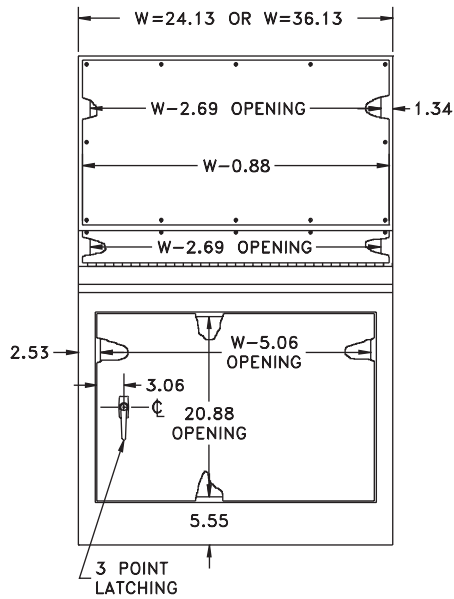
Console Part Number	Price	Body/Door	Console /Body Only	Console Top P/N	Price	Writing Desk P/N	Price	Caster Kit P/N	Price	Subpanel Size HxW
WC1224B	check	14 /14	Console body only 24" wide (610)	WC1224T	check	WC1224W	check	WC12C	check	32x18 (813x457)
WC12B	check	14 /14	Console body only 36" wide (914)	WC12T	check	WC12W	check	WC12C	check	32x30 (813x762)
WC1248BD	check	14 /14	Console body only 48" wide (1219)	WC1248T	check	WC1248W	check	WC12C	check	32x42 (813x1067)

Note: Dimensions in inches (millimeters). Subpanels included. Tops, writing desk, etc. must be ordered separately.

WC12 NEMA 12 OPERATOR CONSOLES

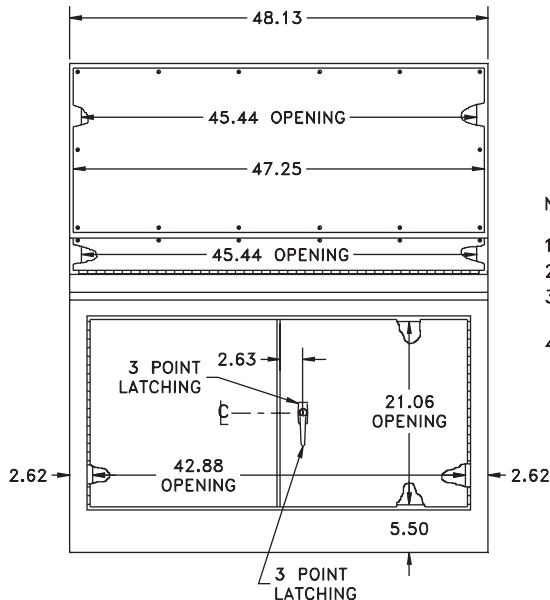
Dimensions

WC1224B & WC12B



WC1248BD

RIGHT VIEW
(APPLICABLE TO ALL)



Notes:

1. Access doors open 180 degrees.
2. One 8X10 Print Pocket is provided.
3. 3-point key-locking handles are provided on main doors.
4. Writing desk is provided with mounting hardware.

ENCLOSURES

WC14 NEMA 12 OPERATOR CONSOLES



Applications

Designed to hold electrical and electronic controls and instruments. Pushbuttons, pilot lights, meters, switches, etc., can be mounted on the instrument panel. Interior components are mounted on stationary sub panels, swing-out sub panels or relay rack angles (panels are optional). Heavy duty construction provides protection from dirt, dust, oil and water.



Enclosure Shipping Schedule		
Same day	1 - 7 days	1 - 10 days
Color indicates shipping lead time in business days		

Construction

Body

- Bodies and doors fabricated from 14 gauge steel
- Seams are continuously welded and ground smooth, less knockouts or holes
- 3-point keylocking handle is provided on front main door
- Double overlapping doors are provided on two door consoles
- Main hinged doors are flush
- One or two large sloping control panels are hinged on bottom
- Control panels have captivated screws threaded into sealed wells
- Door stops provided to hold control panel open
- Two print pockets are included
- Closed cell neoprene gasket
- Horizontal channels are welded to sides of console to support optional panels and swing-out panels
- Grounding provisions provided
- Half, full and swing panels are optional
- An inclined body rail is welded to each side of 24" wide and 36" wide consoles for support of terminal straps
- Optional angle brackets are available for mounting the WC14B console in a standard 19" rack

Part Number: **WC14R (qty. 2)**

Top

- Fabricated from 14-gauge steel
- Top unit is 12.5" deep to accommodate most instruments
- Four holes are provided in bottom of top for mounting to body
- Seams are continuously welded and ground smooth, less knockouts or hole
- Instrument and access panels have captivated screws which thread into sealed wells
- Closed cell neoprene gasket
- Instrument panels and access panels are removable

Writing desk

- Fabricated from 14 gauge steel
- Seams are continuously welded and ground smooth
- Desks are removable and attach easily to console front

Finish

- ANSI-61 gray polyester powder inside and out over phosphatized surfaces
- Optional panels are white polyester powder over phosphatized surfaces

Listings

- UL 508, Types 12 & 13
- UL File E64791
- CSA Certified, Type 12 & 13
- CSA File LL66078
- NEMA/EEMAC Types 12 & 13

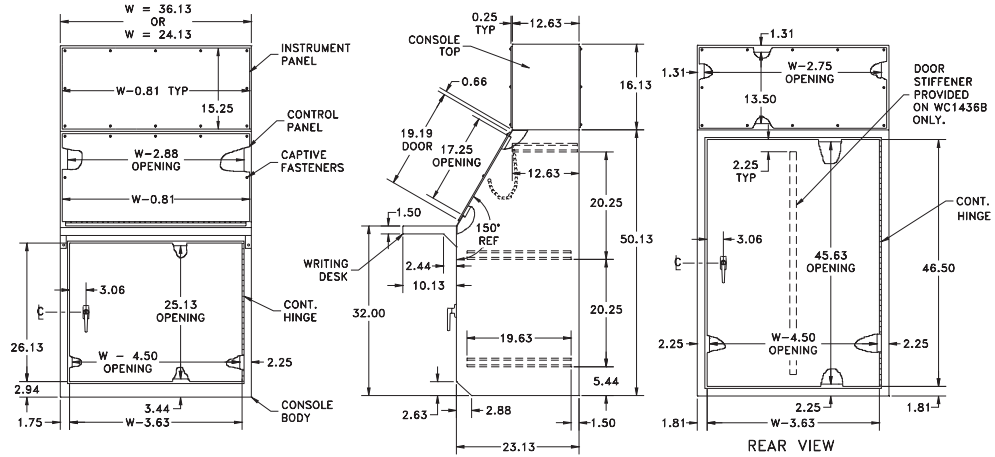
Console P/N	Price	Console Width	Console Top	Price	Writing Desk	Price	Various Subpanels	Sub-panel HxW	Price	Clamping Nuts	Price	Caster Kit	Price
WC14B * (Single Door)	check	24" (610)	WC14T	check	WC14W	check	WC14P1 (Swing Panel)	22x18.13 (559x461)	check	WAPS1420CN	check	WC12C	check
							WC14P2 (Half Panel)	22x17 (559x432)	check				
							WC14P3 (Full Panel)	42.25x17 (1073x432)	check				
WC1436B (Single Door)	check	36" (914)	WC1436T	check	WC1436W	check	WC1436P1 (Swing Panel)	22x30.13 (559x765)	check	WAPS1420CN	check		
							WC1436P2 (Half Panel)	22x29 (559x737)	check				
							WC1436P3 (Full Panel)	42.25x29 (1073x737)	check				
WC1448BD (Double Door)	check	48" (1219)	WC1448T	check	WC1448W	check	WC1448P2 (Half Panel)	22x41 (559x1041)	check	WAPS1420CN	check		
							WC1448P3 (Full Panel)	42.25x41 (1073x1041)	check				
WC1460BD (Double Door)	check	60" (1524)	WC1460T	check	WC1460W	check	WC1460P2 (Half Panel)	22x53 (559x1346)	check	WAPS1420CN	check		
							WC1460P3 (Full Panel)	42.25x53 (1073x1346)	check				

Dimensions in inches (millimeters). Subpanels, etc. must be ordered separately. *See body for optional rack angles(set of 2) for this part only.

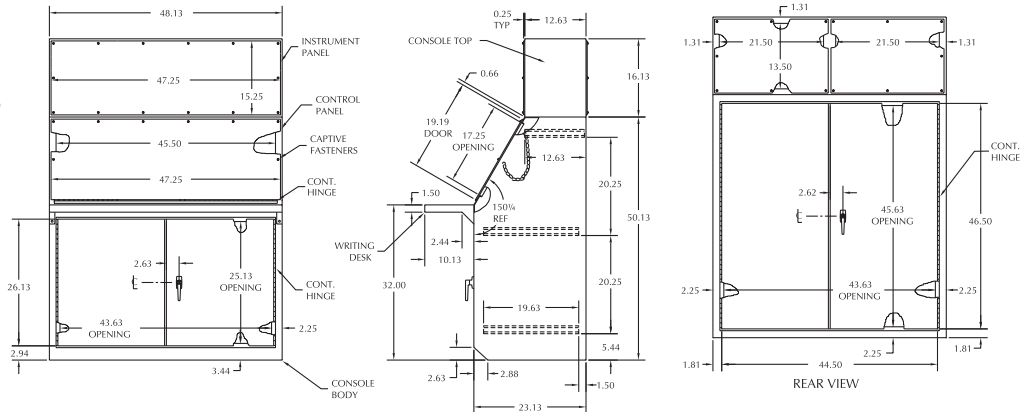
WC14 NEMA 12 OPERATOR CONSOLES

Dimensions

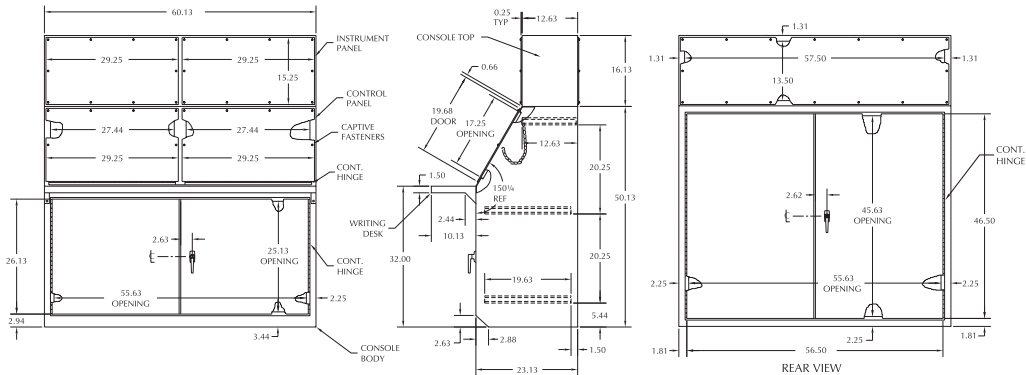
WC14B and WC1436B



WC1448BD



WC1460BD



- Notes:
1. Access doors open 180 degrees.
 2. Two 8"x10" Print Pockets are provided.
 3. 3-point key-locking handles are provided on access doors.
 4. Writing desk is provided with mounting hardware.

ENCLOSURES

WC-C NEMA 12 OPERATOR CONSOLES



Applications

Designed to house a variety of electronic control or instrumentation devices. Consoles provide protection from dirt, dust, oil and water. Flexible design allows for mounting on either of two sides, creating control surfaces of 30 degrees or 60 degrees. Consoles can be mounted on desktops, pedestals, or other flat surfaces.

Construction

- Bodies and doors fabricated from 14 gauge steel
- Seams are continuously welded and ground smooth, less knockouts or holes
- Captivated cover screws threaded into sealed wells

- Control panel is continuously hinged along bottom edge
- Closed cell neoprene gasket
- Grounding provisions provided

Finish

- ANSI-61 gray polyester powder inside and out over phosphatized surfaces

Listings

- UL 508, Types 12 & 13
- UL File E64791
- CSA Certified, Type 12 & 13
- CSA File LL66078
- NEMA/EEMAC Types 12 & 13
- J1C EL-1-71

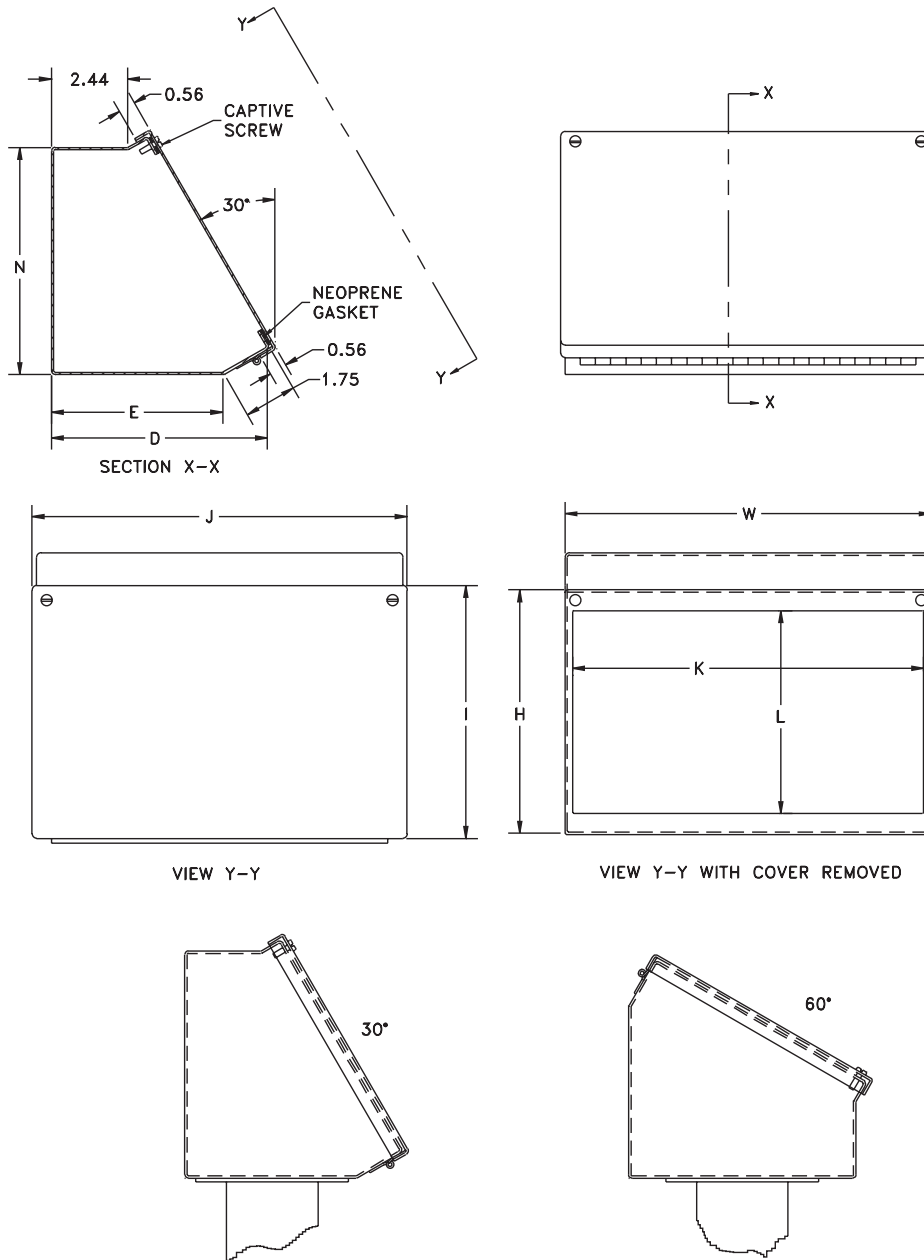
Enclosure Shipping Schedule		
Same day	1 - 7 days	1 -10 days
Color indicates shipping lead time in business days.		

Part Number	Price	Body/Door	Enclosure Size HxWxD	E	N	L	K	I	J
WC08C08	check	14/14	8x8x7.09 (203x203x180)	5.69 (144)	7.44 (189)	6.56 (167)	7.44 (189)	8.31 (211)	8.31 (211)
WC08C12	check	14/14	8x12x7.09 (203x305x180)	5.69 (144)	7.44 (189)	6.56 (167)	11.44 (291)	8.31 (211)	12.31 (313)
WC08C16	check	14/14	8x16x7.09 (203x406x180)	5.69 (144)	7.44 (189)	6.56 (167)	15.44 (392)	8.31 (211)	16.31 (414)
WC08C20	check	14/14	8x20x7.09 (203x508x180)	5.69 (144)	7.44 (189)	6.56 (167)	19.44 (494)	8.31 (211)	20.31 (516)
WC12C12	check	14/14	12x12x9.09 (305x305x231)	7.69 (195)	10.91 (277)	10.56 (268)	11.44 (291)	12.31 (313)	12.31 (313)
WC12C16	check	14/14	12x16x9.09 (305x406x231)	7.69 (195)	10.91 (277)	10.56 (268)	15.44 (392)	12.31 (313)	16.31 (414)
WC12C20	check	14/14	12x20x9.09 (305x508x231)	7.69 (195)	10.91 (277)	10.56 (268)	19.44 (494)	12.31 (313)	20.31 (516)
WC12C24	check	14/14	12x24x9.09 (305x610x231)	7.69 (195)	10.91 (277)	10.56 (268)	23.44 (595)	12.31 (313)	24.31 (618)
WC16C16	check	14/14	16x16x11.09 (406x406x282)	9.69 (246)	14.38 (365)	14.56 (370)	15.44 (392)	16.31 (414)	16.31 (414)
WC16C20	check	14/14	16x20x11.09 (406x508x282)	9.69 (246)	14.38 (365)	14.56 (370)	19.44 (494)	16.31 (414)	20.31 (516)
WC16C24	check	14/14	16x24x11.09 (406x610x282)	9.69 (246)	14.38 (365)	14.56 (370)	23.44 (595)	16.31 (414)	24.31 (618)
WC16C30	check	14/14	16x30x11.09 (406x762x282)	9.69 (246)	14.38 (365)	14.56 (370)	29.44 (748)	16.31 (414)	30.31 (770)
WC16C36	check	14/14	16x36x11.09 (406x914x282)	9.69 (246)	14.38 (365)	14.56 (370)	35.44 (900)	16.31 (414)	36.31 (922)
WC20C20	check	14/14	20x20x13.09 (508x508x333)	11.69 (297)	17.84 (453)	18.56 (471)	19.44 (494)	20.31 (516)	20.31 (516)
WC20C24	check	14/14	20x24x13.09 (508x610x333)	11.69 (297)	17.84 (453)	18.56 (471)	23.44 (595)	20.31 (516)	24.31 (618)
WC20C30	check	14/14	20x30x13.09 (508x762x333)	11.69 (297)	17.84 (453)	18.56 (471)	29.44 (748)	20.31 (516)	30.31 (770)

Dimensions in inches (millimeters); letters in table correspond to letters on dimensional drawings.

WC-C NEMA 12 OPERATOR CONSOLETS

Dimensions



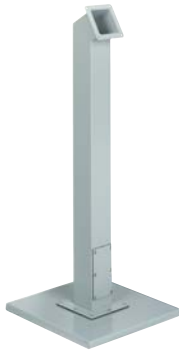
Consolet can be positioned at 30° or 60° angle.

ENCLOSURES

CCOL AND BASE SERIES PEDESTALS FOR NEMA 12 OPERATOR CONSOLES



WA44CCOL shown with optional base



WA44BPCOL shown with optional base

Applications

Designed to permit floor mounting of many types of enclosures and boxes. Four column and two base sizes are available. Columns can be mounted on either base. Wiring connections can be made through the base, through the vertical column, or directly to the enclosure. Columns have flanges at each end and a gasketed access plate. Screws, oil-resistant gaskets, and box connector fitting are furnished with each column for joining an enclosure to the top of the column. A cutout must be made in the enclosure if the wires are to come through the column.



Construction

Column

- Columns fabricated from 14 gauge steel with 10 gauge flanges
- Gasket, screws and box connective fittings are furnished for mounting console
- Columns feature gasketed access plate

Base

- 18" bases are fabricated from 10 gauge steel
- 24" bases are fabricated from 7 gauge steel
- Both bases have added reinforcing, leveling screws and holes for securing to floor

Finish

- ANSI-61 gray polyester powder inside and out over phosphatized surfaces

Listings

- UL 508, Types 12 & 13
- UL File E64791
- CSA Certified, Type 12 & 13
- CSA File LL66078
- NEMA/EEMAC Types 12 & 13

Enclosure Shipping Schedule		
Same day	1 - 7 days	1 - 10 days
Color indicates shipping lead time in business days.		

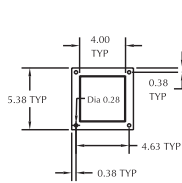
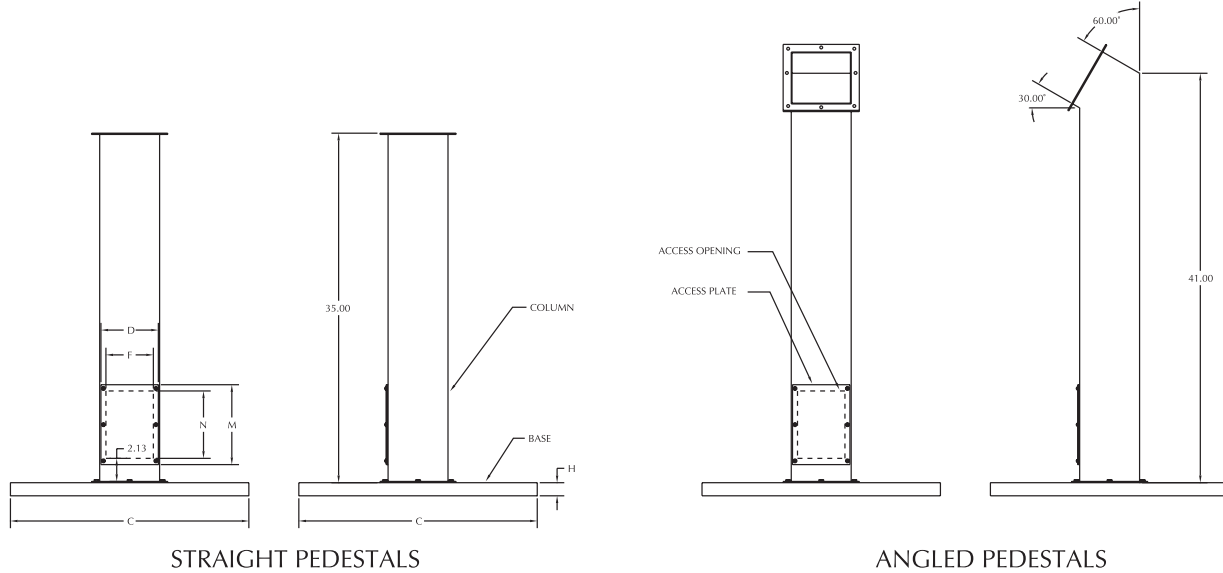
Part Number	Price	Steel Gauge	Size	Description	C	D	F	H	M	N	P
WA44CCOL	check	14	4x4 (102x102)	Straight pedestal column	—	3.75 (95)	2.75 (70)	—	7.25 (184)	6.00 (152)	—
WA66CCOL	check	14	6x6 (152x152)	Straight pedestal column	—	5.75 (146)	4.75 (121)	—	8.00 (203)	6.75 (171)	—
WA44PBCOL	check	14	4x4 (102x102)	Angled pedestal column	—	3.75 (95)	2.75 (70)	—	7.25 (184)	6.00 (152)	—
WA66PBCOL	check	14	6x6 (152x152)	Angled pedestal column	—	5.75 (146)	4.75 (121)	—	8.00 (203)	6.75 (171)	—
WA18SBASE	check	10	18x18 (457x457)	Pedestal base	18.06 (459)	—	—	1.13 (29)	—	—	0.47 (12)
WA24SBASE	check	7	24x24 (610x610)	Pedestal base	23.88 (606)	—	—	1.31 (33)	—	—	0.78 (20)

Dimensions in inches (millimeters); letters in table correspond to letters on dimensional drawings.

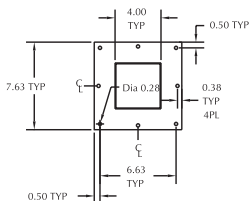
Note: The user would normally remove the mounting feet from the enclosure if the enclosure is mounted on a pedestal.

CCOL AND BASE SERIES PEDESTALS FOR NEMA 12 OPERATOR CONSOLES

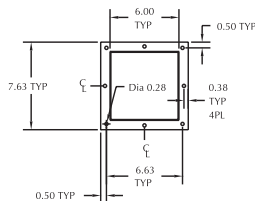
Dimensions



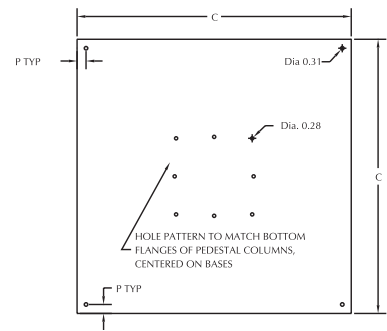
TOP FLANGE
4 X 4



BOTTOM FLANGE
4 X 4



TOP AND BOTTOM FLANGES
6 X 6



TOP VIEW OF BASES

ENCLOSURES