



# NEMA RUGGEDNESS AT IEC PRICES

## You asked for them

And we listened. We teamed with Cutler-Hammer to bring you a new line of 30 mm pilot devices. AUTOMATIONDIRECT customers demand top quality at almost free prices. Designing a pushbutton that will satisfy NEMA requirements while maintaining the value you've come to expect from AUTOMATIONDIRECT is not an easy task. We took advantage of the experience of Cutler-Hammer engineering to take existing product technology and make it better. We proudly introduce the HT800 line of 30 mm pilot devices from Cutler-Hammer.

## Beauty and the beast

When you're strong enough for the foundry, petro-chemical plant, water treatment facility and paper mill, you can't possibly be attractive. The HT800 line breaks the rules. From the corrosion-resistant anodized mounting rings to the optically-enhanced lenses on our indicators, the HT800 line finishes out your control panel in style. Extended lamps and LEDs provide better side illumination in our indicators and illuminated pushbuttons. Watertight double V gaskets stand between the environment and your control system. Use them indoors or out. They're protected to NEMA 1, 2, 3, 3R, 4, 4X, 12, and 13. The pushbutton operators are rated at 10 million mechanical cycles. That's about 550 operations per day for 50 years. The color-coded contact blocks are NEMA rated to A600/P600 and IEC rated AC15/DC13.

## Order what you need

The HT800 line is offered as separate components or kitted assemblies. Order a switch assembly and we pick the individual components in our automated warehouse and ship them to you the same day you order them. Assemble them when your order arrives. As with all AUTOMATIONDIRECT products, you can try them for 30 days. If you're not satisfied, return them for a full refund.

Also available:



Extended



Illuminated



Mushroom

## 30 mm pushbuttons



Color-coded contact blocks

Available in green, black, and red, flush and extended



Double V Gasket Seals

Anodized aluminum mounting ring

Grounding kits included with each device

Stack contact blocks up to six deep by two wide on pushbutton operators. Contact capacity varies with operator.

HT8AAGA shown (operator + 1 N.O. contact block)

Compare to Allen-Bradley 800T-A1D1



# BIG SWITCH, LITTLE PRICE

## 30 mm selector switches

- White inlay for easy visual position indication
- Actuator position adjustable in 22.5 degree increments
- Selector switches available in two and three-position in several configurations
- All configurations offered with knob or lever actuation

**HT8JBH1D shown (actuator only)**  
**(complete selector switch assemblies also available)**



Also available:



**Lever versions**



## 30 mm indicating lights

- Anodized aluminum mounting ring
- Optically-enhanced lenses and extended length lamps provide excellent front and side illumination.
- Available in 24V and 120V full voltage versions
- Available in seven colors

**HT8HFYV7 shown**

**Compare to Allen-Bradley 800T-Q10A**



## 30 mm push-to-test indicators

- Pre-wired push-to-test indicators make installation fast and troubleshooting easy.
- Available in seven colors

**HT8GVGV7 shown**

**Compare to Allen-Bradley 800T-QT10G**



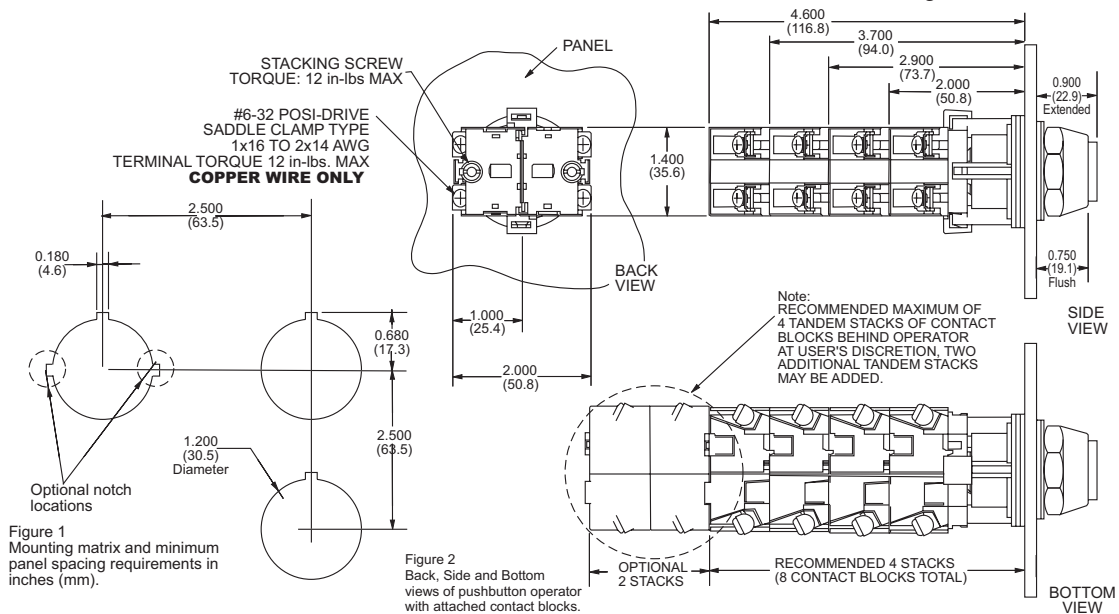
# HT800 30 MM MOMENTARY PUSHBUTTONS



Contact Type	Button Color	Flush Head Momentary		Extended Head Momentary		Mushroom Head Momentary	
		Catalog Number	Price	Catalog Number	Price	Catalog Number	Price
<b>Operator Only, No Contacts</b>	Black	<b>HT8AAH</b>	check	<b>HT8ABH</b>	check	<b>HT8AEH</b>	check
	Red	<b>HT8AAR</b>	check	<b>HT8ABR</b>	check	<b>HT8AER</b>	check
	Green	<b>HT8AAG</b>	check	<b>HT8ABG</b>	check	<b>HT8AEG</b>	check
<b>1 N.O.</b>	Black	<b>*HT8AAHA</b>	check	<b>*HT8ABHA</b>	check	<b>*HT8AEHA</b>	check
	Red	<b>*HT8AARA</b>	check	<b>*HT8ABRA</b>	check	<b>*HT8AERA</b>	check
	Green	<b>*HT8AAGA</b>	check	<b>*HT8ABGA</b>	check	<b>*HT8AEGA</b>	check
<b>1 N.C.</b>	Black	<b>*HT8AAHB</b>	check	<b>*HT8ABHB</b>	check	<b>*HT8AEHB</b>	check
	Red	<b>*HT8AARB</b>	check	<b>*HT8ABRB</b>	check	<b>*HT8AERB</b>	check
	Green	<b>*HT8AAGB</b>	check	<b>*HT8ABGB</b>	check	<b>*HT8AEGB</b>	check
<b>1 N.O. and 1 N.C.</b>	Black	<b>*HT8AAHAB</b>	check	<b>*HT8ABHAB</b>	check	<b>*HT8AEHAB</b>	check
	Red	<b>*HT8AARAB</b>	check	<b>*HT8ABRAB</b>	check	<b>*HT8AERAB</b>	check
	Green	<b>*HT8AAGAB</b>	check	<b>*HT8ABGAB</b>	check	<b>*HT8AEGAB</b>	check
<b>2 N.O. and 2 N.C.</b>	Black	<b>*HT8AAHF1Q1</b>	check	<b>*HT8ABHF1Q1</b>	check	<b>*HT8AEHF1Q1</b>	check
	Red	<b>*HT8AARF1Q1</b>	check	<b>*HT8ABRF1Q1</b>	check	<b>*HT8AERF1Q1</b>	check
	Green	<b>*HT8AAGF1Q1</b>	check	<b>*HT8ABGF1Q1</b>	check	<b>*HT8AEGF1Q1</b>	check

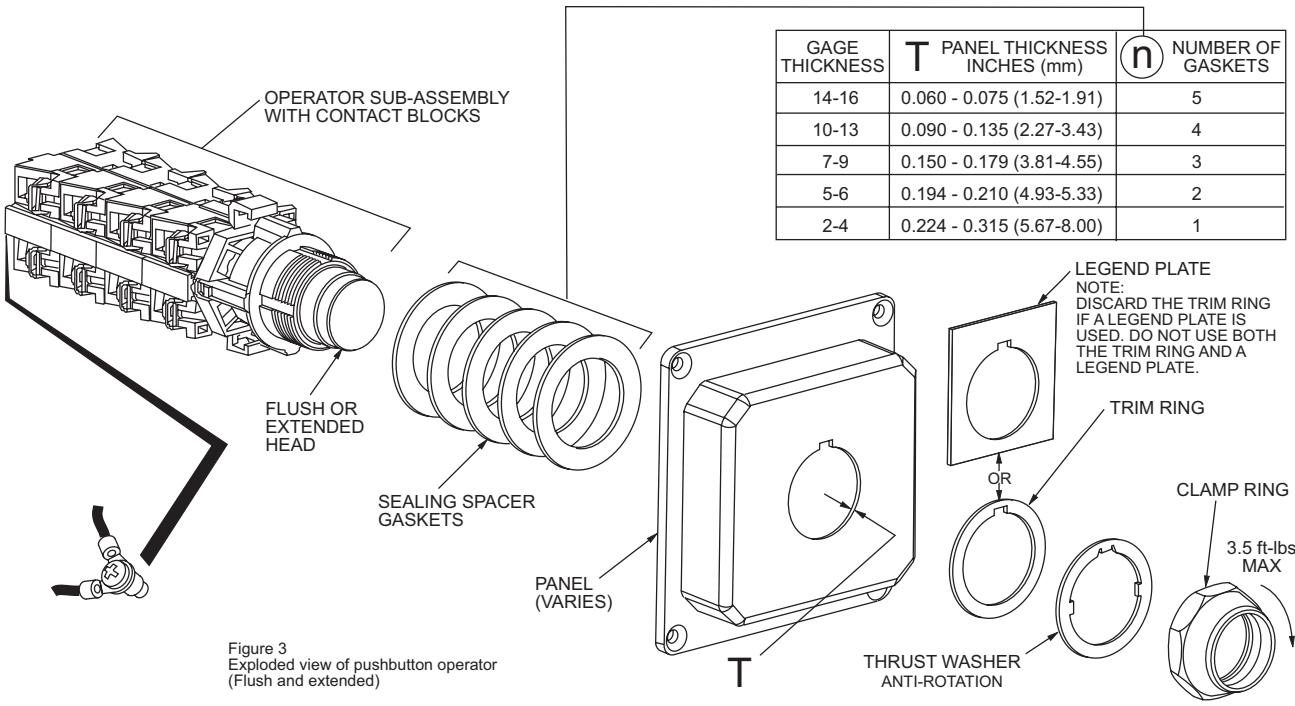
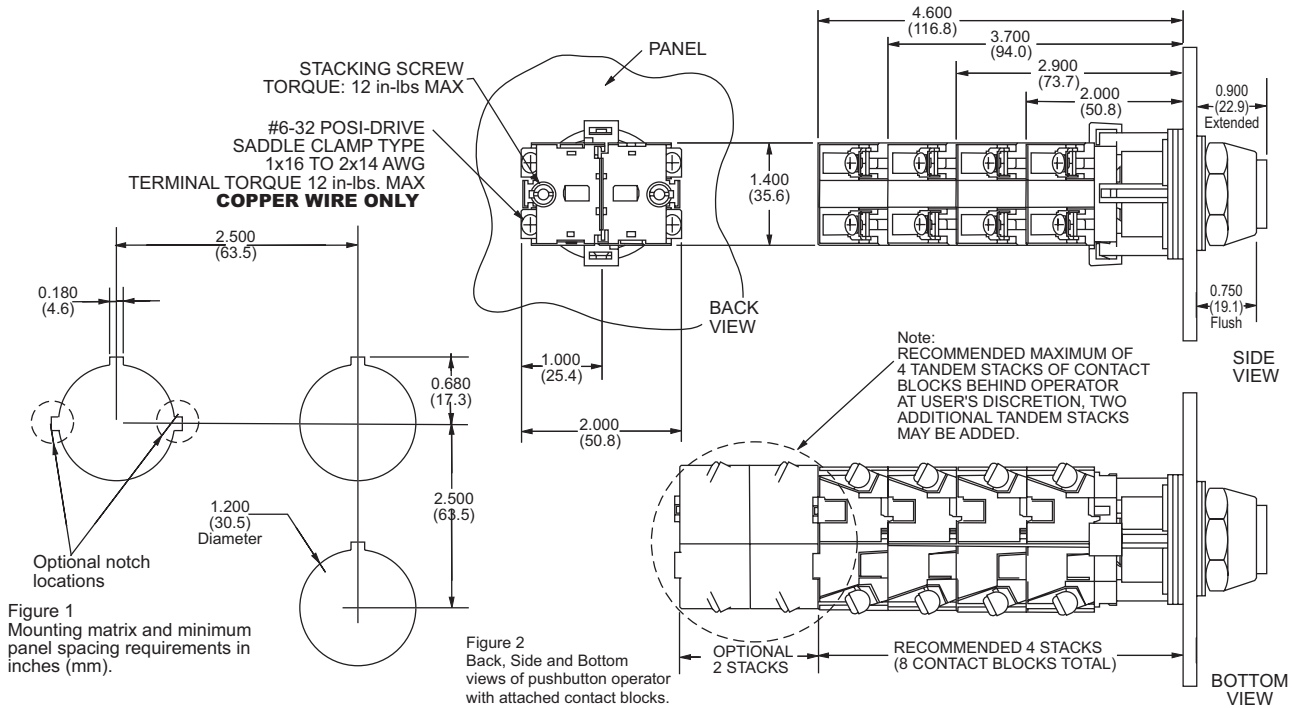
**Notes:** A grounding kit is included with each operator or switch assembly.  
 Part numbers with an \* are kitted from individual components at AUTOMATIONDIRECT. The individual components are picked and shipped in the same shipping box. Final assembly of the individual components must be done by the customer.

### 30.5 mm Pushbutton Installation and Mounting Instructions



# HT800 30 mm MOMENTARY PUSHBUTTONS

## 30.5 mm Pushbutton Installation and Mounting Instructions





Cutler-Hammer

# HT800 30 mm Two-Position Push-Pull Button



HT8CBR

Contact Configuration	Operator Position		Two-position Maintained Push-Pull		
	Out	In	Color	Catalog Number	Price
Operator Only	-----		Red	HT8CBR	check
1 N.C.	X	0	Red	*HT8CBRB	check
1 N.O. and 1 N.C.	"0 X"	"X 0"	Red	*HT8CBRAB	check

**Notes:** A grounding kit is included with each operator or switch assembly.

Part numbers with an \* are kitted from individual components at AUTOMATIONDIRECT. The individual components are picked and shipped in the same shipping box. Final assembly of the individual components must be done by the customer.

### 30.5 mm Pushbutton Installation and Mounting Instructions

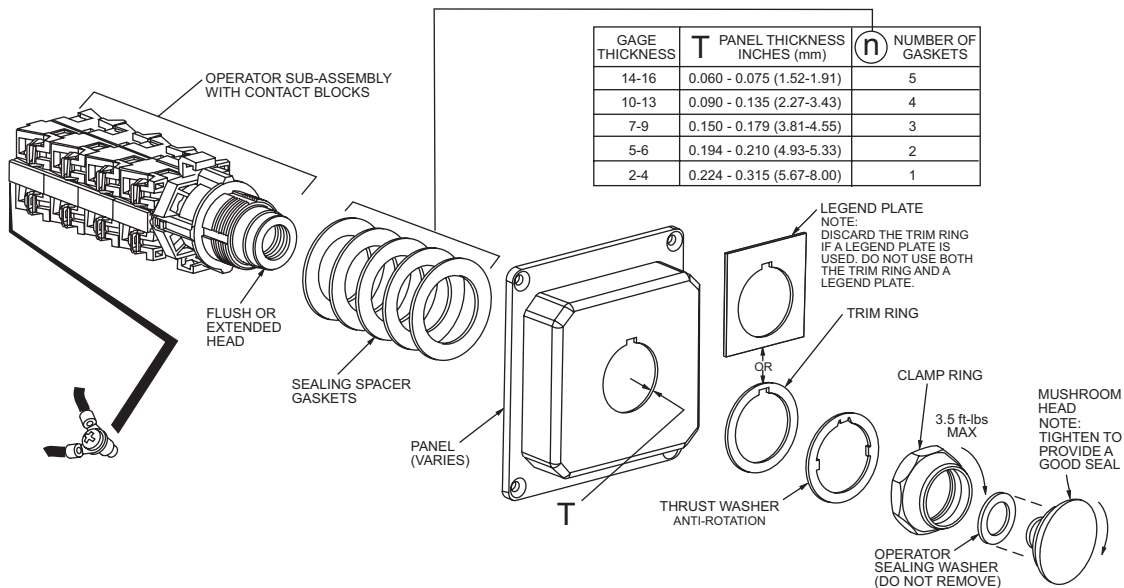
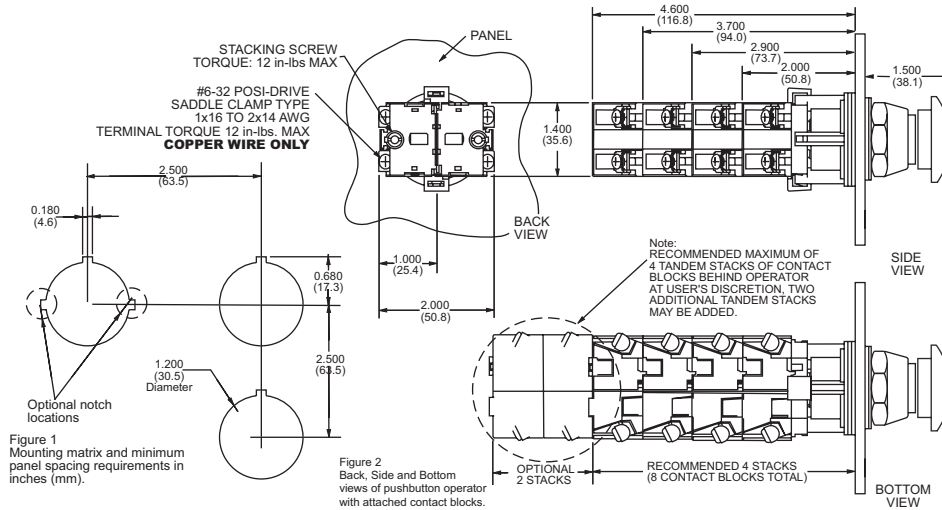


Figure 3 Exploded view of mushroom head operator





# HT800 30 MM TWO-POSITION SELECTOR SWITCHES



**HT8JAH3A knob version**



**HT8JDH3A lever version**

Contact Type	Operator Type M=Maintained S=Spring Return	Standard Black Knob Operator		Standard Black Lever Operator	
		Catalog Number	Price	Catalog Number	Price
<b>No Contacts</b>	M M	HT8JAH3A	check	HT8JDH3A	check
	M-S	HT8JNH3A	check	HT8JPH3A	check
<b>1 N.O.</b>	M M	*HT8JAH3AA5	check	*HT8JDH3AA5	check
	M-S	*HT8JNH3AA5	check	*HT8JPH3AA5	check

**Notes:** A grounding kit is included with each operator or switch assembly.

Part numbers with an \* are kitted from individual components at AUTOMATIONDIRECT. The individual components are picked and shipped in the same shipping box. Final assembly of the individual components must be done by the customer.

Switch Part Numbers	Contact Blocks		Cam Code 3A	
HT8JAH3A, HT8JNH3A, HT8JAH3AA5, HT8JNH3AA5, HT8JDH3A, HT8JPH3A, HT8JDH3AA5, HT8JPH3AA5 (Contact block configuration varies with part number)	Left	Right	Switch Position	
<b>Two-position Selector Switch</b>	N.O.	-----	X	0
	N.C.	-----	0	X
	-----	N.O.	0	X
	-----	N.C.	X	0
<b>Note:</b> AUTOMATIONDIRECT only offers cam code 3A for two position selector switches.			X = On	0 = Off



Cutler-Hammer

# HT800 30 MM THREE-POSITION SELECTOR SWITCHES



**HT8JBH1D knob version**



**HT8JEH1D lever version**

Contact Type	Operator Type M=Maintained S=Spring Return	Standard Black Knob Operator		Standard Black Lever Operator	
		Catalog Number	Price	Catalog Number	Price
<b>No Contacts</b>	M M M	<b>HT8JBH1D</b>	check	<b>HT8JEH1D</b>	check
	M M < S	<b>HT8JUH1D</b>	check	<b>HT8JVH1D</b>	check
	S > M < S	<b>HT8JXH1D</b>	check	<b>HT8JYH1D</b>	check
<b>2 N.O.</b>	M M M	<b>*HT8JBH1DAA5</b>	check	<b>*HT8JEH1DAA5</b>	check
	M M < S	<b>*HT8JUH1DAA5</b>	check	<b>*HT8JVH1DAA5</b>	check
	S > M < S	<b>*HT8JXH1DAA5</b>	check	<b>*HT8JYH1DAA5</b>	check

**Notes:** A grounding kit is included with each operator or switch assembly.

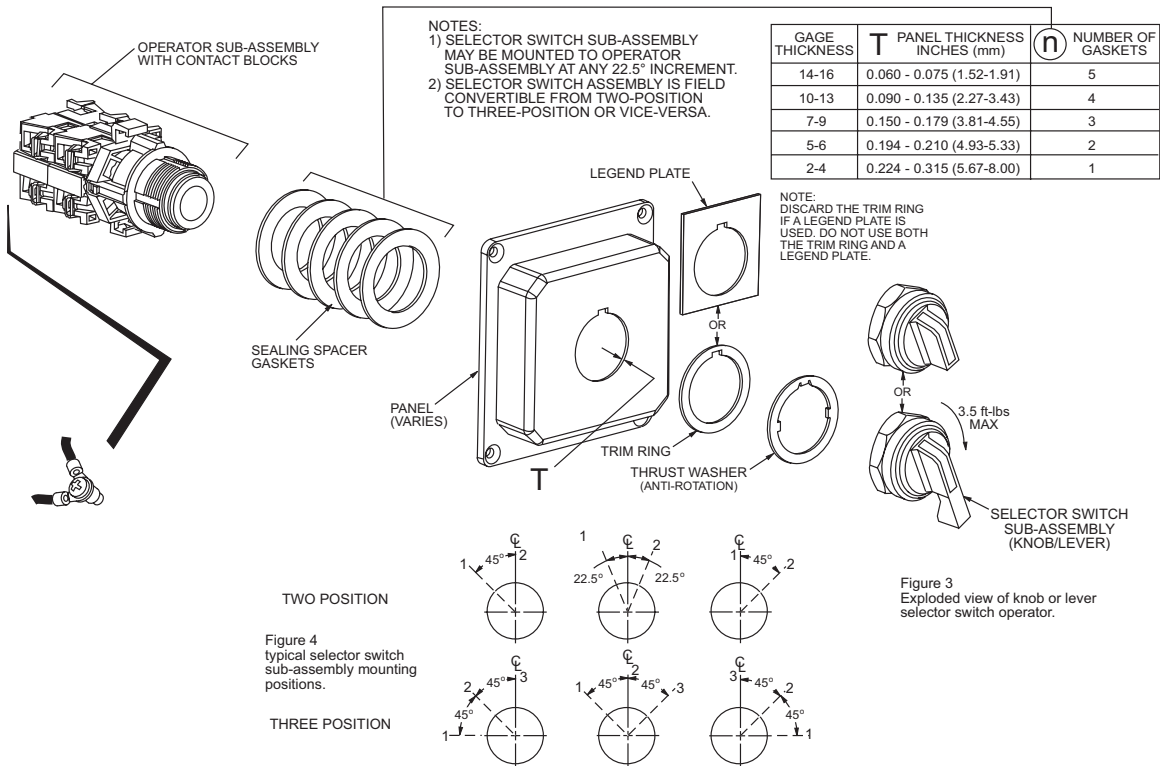
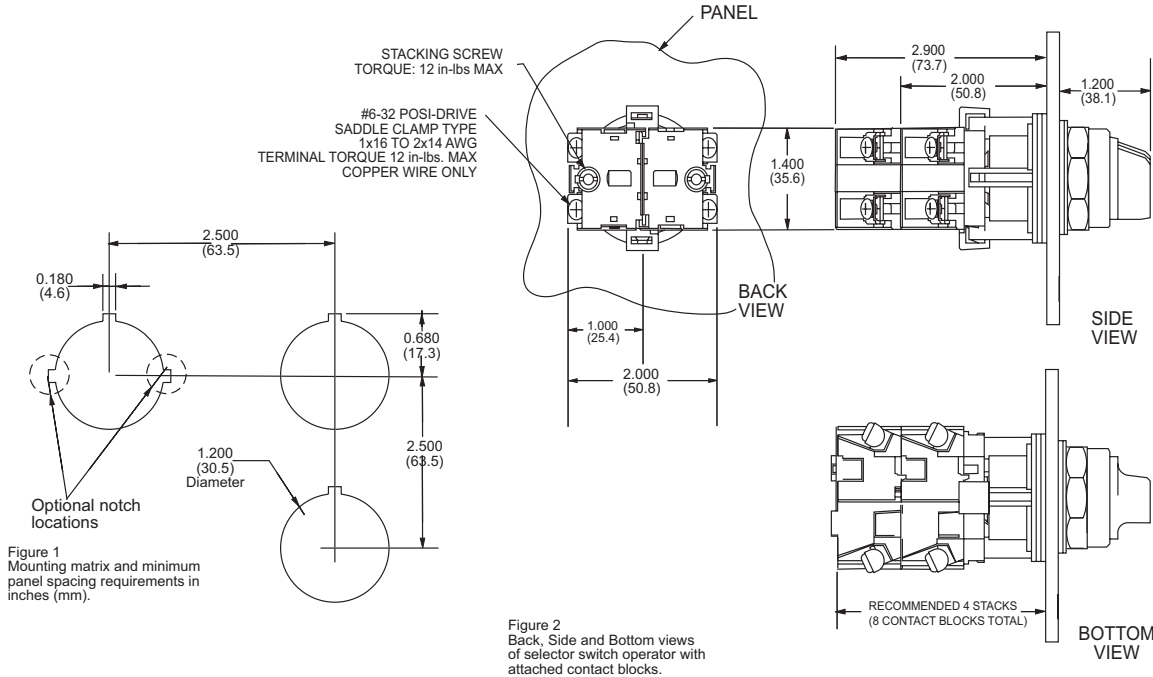
Part numbers with an \* are kitted from individual components at AUTOMATIONDIRECT. The individual components are picked and shipped in the same shipping box. Final assembly of the individual components must be done by the customer.

Switch Part Numbers	Contact Blocks		Cam Code 1D		
	Left	Right	Switch Position		
<b>HT8JBH1D, HT8JUH1D, HT8JXH1D, HT8JBH1DAAD, HT8JUH1DAA5, HT8JXH1DAA5, HT8JEH1D, HT8JVH1D, HT8JYH1D, HT8JEH1DAA5, HT8JVH1DAA5, HT8JYH1DAA5</b> (contact block configuration varies with part number)					
	NO	-----	X	0	0
	NC	-----	0	X	X
	-----	NO	0	0	X
	-----	NO	X	X	0
	*NO-----	-----NO	0	0	0
*NC-----	-----NC	0	X	0	
* Indicates contact blocks wired in series			X = On	0 = Off	

**Note:** AutomationDirect only offers cam code 1D for three-position selector switches.

# HT800 30 MM THREE-POSITION SELECTOR SWITCHES

## 30.5 mm Selector Switch Installation and Mounting Instructions







# HT800 30 mm EXTENDED ILLUM. PUSHBUTTONS



**Red**

HT8GBRV7



**Green**

HT8GBGV7



**Amber**

HT8GBAV7



**Clear**

HT8GBCV7



**White**

HT8GBWV7



**Yellow**

HT8GBYV7



**Blue**

HT8GBBV7

Contact Configuration	24 Volt Incandescent full Voltage Lamp 50mA @ 24 Volts	Price	120 Volt Incandescent Full Voltage Lamp 19mA @ 120 Volts	Price
<b>Red Lens</b>				
Operator only	<b>HT8GBRV3</b>	check	<b>HT8GBRV7</b>	check
1 N.O.	<b>*HT8GBRAV3</b>	check	<b>*HT8GBRAV7</b>	check
1 N.C.	<b>*HT8GBRBV3</b>	check	<b>*HT8GBRBV7</b>	check
<b>Green Lens</b>				
Operator only	<b>HT8GBGV3</b>	check	<b>HT8GBGV7</b>	check
1 N.O.	<b>*HT8GBGAV3</b>	check	<b>*HT8GBGAV7</b>	check
1 N.C.	<b>*HT8GBGBV3</b>	check	<b>*HT8GBGBV7</b>	check
<b>Amber Lens</b>				
Operator only	<b>HT8GBAV3</b>	check	<b>HT8GBAV7</b>	check
1 N.O.	<b>*HT8GBAAV3</b>	check	<b>*HT8GBAAV7</b>	check
1 N.C.	<b>*HT8GBABV3</b>	check	<b>*HT8GBABV7</b>	check
<b>Clear Lens</b>				
Operator only	<b>HT8GBCV3</b>	check	<b>HT8GBCV7</b>	check
1 N.O.	<b>*HT8GBCAV3</b>	check	<b>*HT8GBCAV7</b>	check
1 N.C.	<b>*HT8GBCBV3</b>	check	<b>*HT8GBCBV7</b>	check
<b>White Lens</b>				
Operator only	<b>HT8GBWV3</b>	check	<b>HT8GBWV7</b>	check
1 N.O.	<b>*HT8GBWAV3</b>	check	<b>*HT8GBWAV7</b>	check
1 N.C.	<b>*HT8GBWBV3</b>	check	<b>*HT8GBWBV7</b>	check
<b>Yellow Lens</b>				
Operator only	<b>HT8GBYV3</b>	check	<b>HT8GBYV7</b>	check
1 N.O.	<b>*HT8GBYAV3</b>	check	<b>*HT8GBYAV7</b>	check
1 N.C.	<b>*HT8GBYBV3</b>	check	<b>*HT8GBYBV7</b>	check
<b>Blue Lens</b>				
Operator only	<b>HT8GBBV3</b>	check	<b>HT8GBBV7</b>	check
1 N.O.	<b>*HT8GBBAV3</b>	check	<b>*HT8GBBAV7</b>	check
1 N.C.	<b>*HT8GBBBV3</b>	check	<b>*HT8GBBBV7</b>	check
<b>Spare Incandescent Lamps For HT8 Series</b>				
Spare lamp	<b>HT8BULBV3</b>	check	<b>HT8BULBV7</b>	check

**Notes:** A grounding kit is included with each operator or switch assembly.

Part numbers with an \* are kitted from individual components at AUTOMATIONDIRECT. The individual components are picked and shipped in the same shipping box. Final assembly of the individual components must be done by the customer.





Cutler-Hammer

# HT800 30 MM PUSH-TO-TEST INDICATORS



**Red**

**HT8GVRV7**



**Green**

**HT8GVGV7**



**Amber**

**HT8GVAV7**



**Clear**

**HT8GVCV7**



**White**

**HT8GVVW7**



**Yellow**

**HT8GVYV7**



**Blue**

**HT8GVBV7**

Push-To-Test Indicator	24 Volt Incandescent Full Voltage Lamp 50mA @ 24 Volts	Price	120 Volt Incandescent Full Voltage Lamp 19mA @ 120 Volts	Price
<b>Red Lens</b>				
PTT indicator assembly	<b>HT8GVRV3</b>	check	<b>HT8GVRV7</b>	check
<b>Green Lens</b>				
PTT indicator assembly	<b>HT8GVGV3</b>	check	<b>HT8GVGV7</b>	check
<b>Amber Lens</b>				
PTT indicator assembly	<b>HT8GVAV3</b>	check	<b>HT8GVAV7</b>	check
<b>Clear Lens</b>				
PTT indicator assembly	<b>HT8GVCV3</b>	check	<b>HT8GVCV7</b>	check
<b>White Lens</b>				
PTT indicator assembly	<b>HT8GVVW3</b>	check	<b>HT8GVVW7</b>	check
<b>Yellow Lens</b>				
PTT indicator assembly	<b>HT8GVYV3</b>	check	<b>HT8GVYV7</b>	check
<b>Blue Lens</b>				
PTT indicator assembly	<b>HT8GVBV3</b>	check	<b>HT8GVBV7</b>	check
<b>Spare Incandescent Lamps For HT8 Series</b>				
Spare lamp	<b>HT8BULBV3</b>	check	<b>HT8BULBV7</b>	check

**Notes:** A grounding kit is included with each operator or switch assembly.

Part numbers with an \* are kitted from individual components at AUTOMATIONDIRECT. The individual components are picked and shipped in the same shipping box. Final assembly of the individual components must be done by the customer.

# HT800 30 MM PUSH-TO-TEST INDICATORS

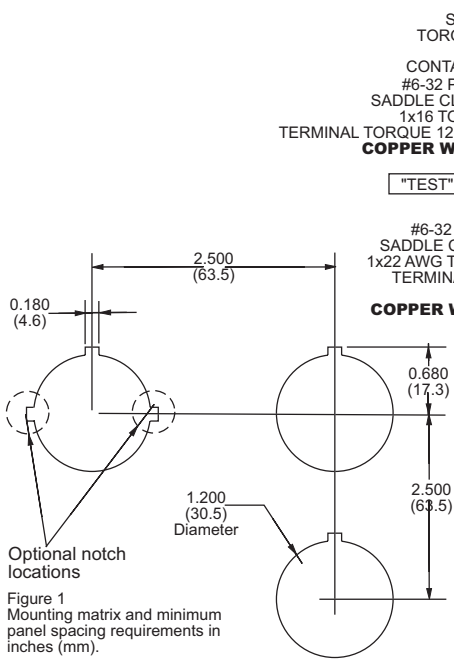


Figure 1 Mounting matrix and minimum panel spacing requirements in inches (mm).

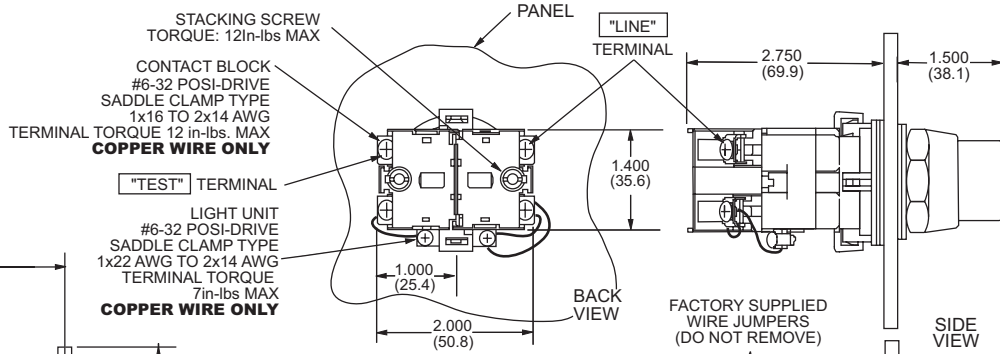


Figure 2 Back, Side and Bottom views of Push-To-Test operator

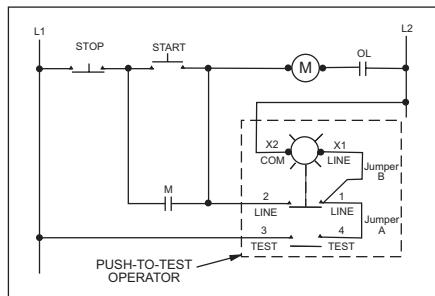


Figure 3 Typical Connection Diagram

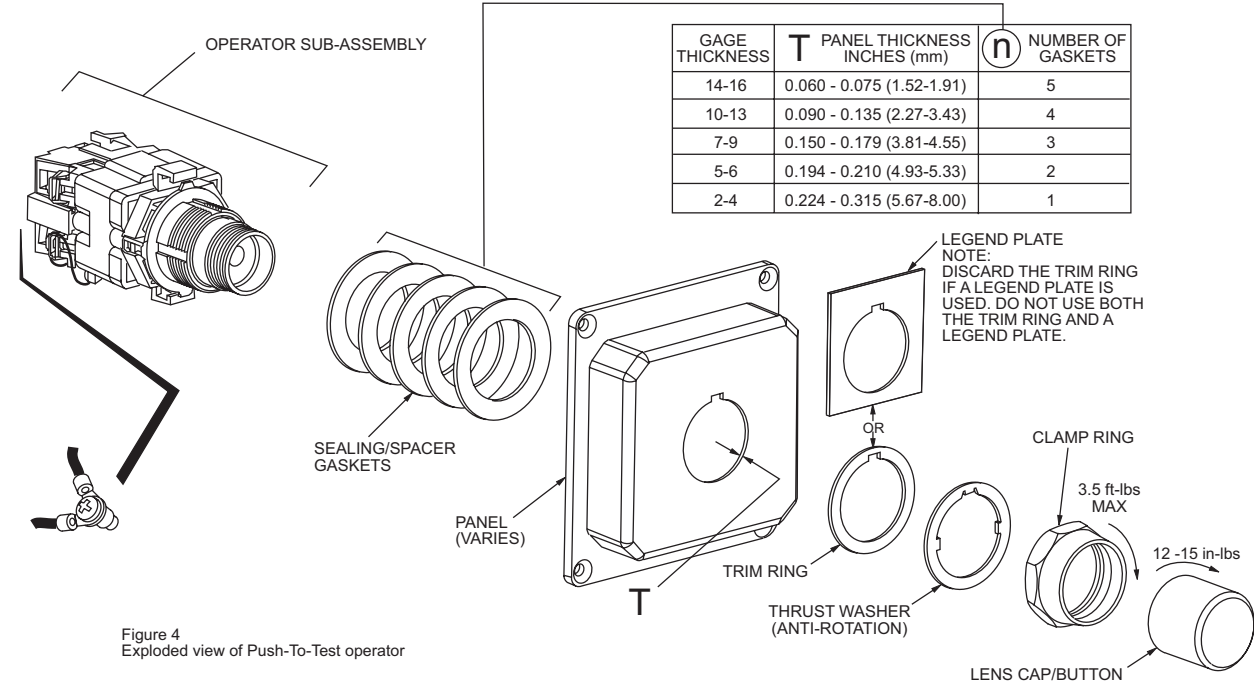


Figure 4 Exploded view of Push-To-Test operator



# HT800 30 MM INCANDESCENT INDICATORS



**HT8HFRV7** *Red*



**HT8HFGV7** *Green*



**HT8HFAV7** *Amber*



**HT8HFCV7** *Clear*



**HT8HFVW7** *White*



**HT8HFYV7** *Yellow*



**HT8HFBV7** *Blue*

Incandescent Indicator	24 Volt Incandescent Full Voltage Lamp 50mA @ 24 Volts	Price	120 Volt Incandescent Full Voltage Lamp 19mA @ 120 Volts	Price
<b>Red Lens</b>				
PTT indicator assembly	<b>HT8HFRV3</b>	check	<b>HT8HFRV7</b>	check
<b>Green Lens</b>				
PTT indicator assembly	<b>HT8HFGV3</b>	check	<b>HT8HFGV7</b>	check
<b>Amber Lens</b>				
PTT indicator assembly	<b>HT8HFAV3</b>	check	<b>HT8HFAV7</b>	check
<b>Clear Lens</b>				
PTT indicator assembly	<b>HT8HFCV3</b>	check	<b>HT8HFCV7</b>	check
<b>White Lens</b>				
PTT indicator assembly	<b>HT8HFVW3</b>	check	<b>HT8HFVW7</b>	check
<b>Yellow Lens</b>				
PTT indicator assembly	<b>HT8HFYV3</b>	check	<b>HT8HFYV7</b>	check
<b>Blue Lens</b>				
PTT indicator assembly	<b>HT8HFBV3</b>	check	<b>HT8HFBV7</b>	check
<b>Spare Incandescent Lamps For HT8 Series</b>				
Spare lamp	<b>HT8BULBV3</b>	check	<b>HT8BULBV7</b>	check

**Notes:** A grounding kit is included with each operator or switch assembly.

Part numbers with an \* are kitted from individual components at AUTOMATIONDIRECT. The individual components are picked and shipped in the same shipping box. Final assembly of the individual components must be done by the customer.



# HT800 30 MM INCANDESCENT INDICATORS

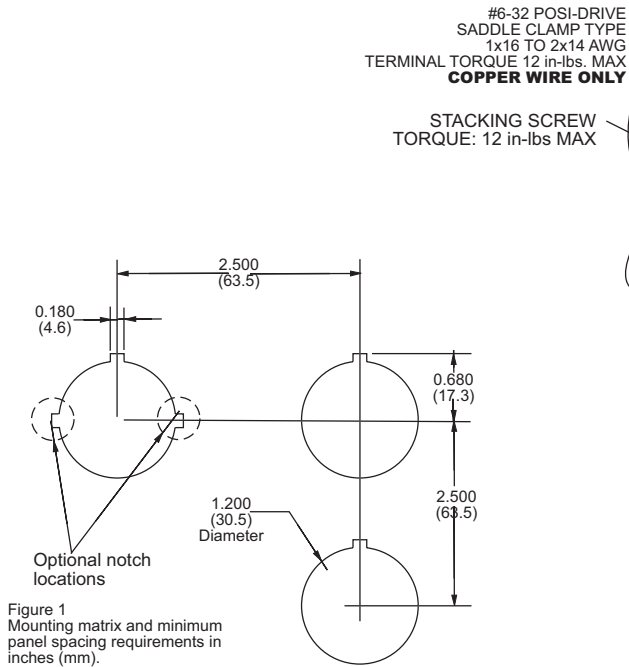


Figure 1  
Mounting matrix and minimum panel spacing requirements in inches (mm).

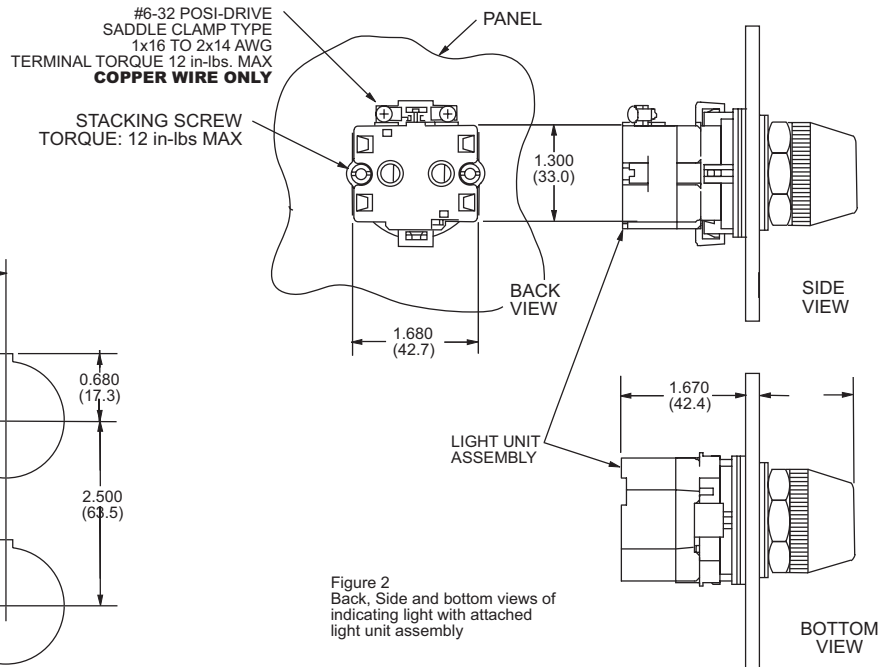


Figure 2  
Back, Side and bottom views of indicating light with attached light unit assembly

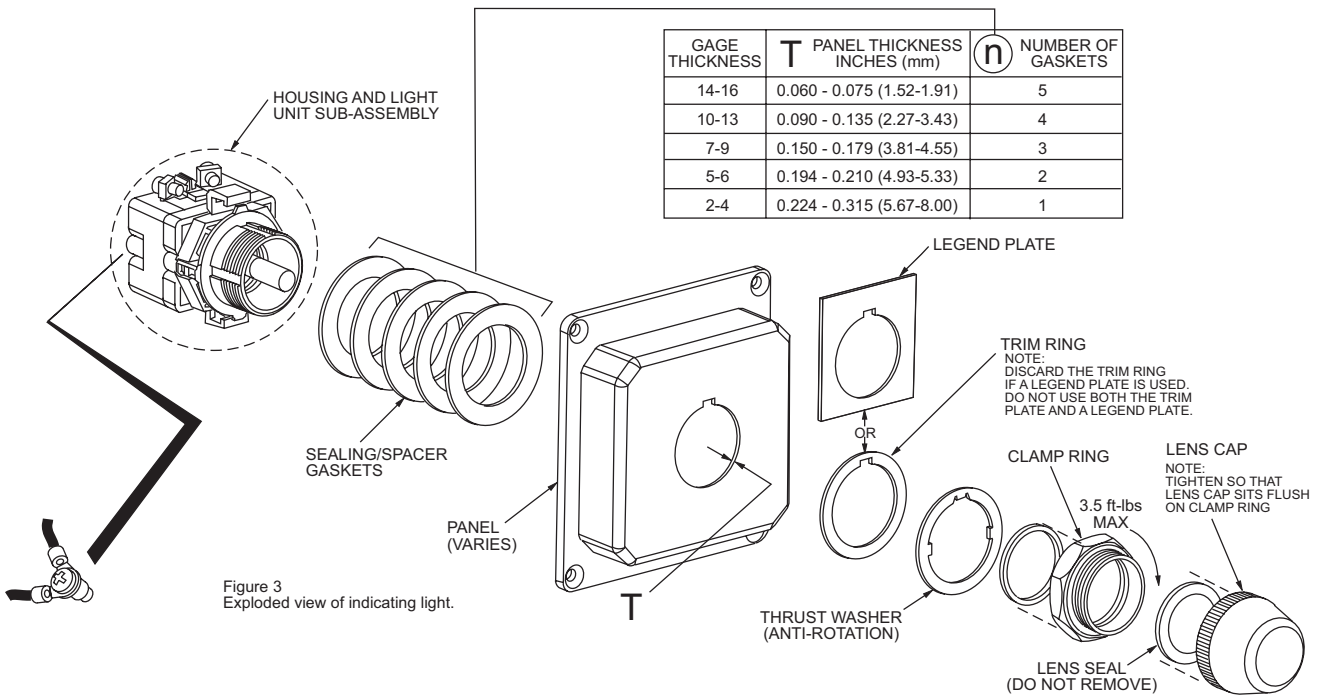


Figure 3  
Exploded view of indicating light.



Cutler-Hammer

# HT800 30 MM CONTACT BLOCKS & ACCESSORIES

## Contact blocks



**HT8A**



**HT8B**

HT8 Series Contact Blocks		
Part Number	Description	Price
<b>HT8A</b>	Normally open contact block for HT8 series switches. NEMA Rated A600, P600. IEC rated AC15/DC13	check
<b>HT8B</b>	Normally closed contact block for HT8 series switches. NEMA Rated A600, P600. IEC rated AC15/DC13	check
<b>HT8C</b>	Early closing normally open contact block for HT8 series switches. NEMA Rated A600, P600. IEC rated AC15/DC13	check
<b>HT8D</b>	Late opening normally closed contact block for HT8 series switches. NEMA Rated A600, P600. IEC rated AC15/DC13	check
<b>HT8E</b>	Logic level normally open contact block for HT8 series switches. Gold plated contacts for reliable low energy switching	check

## Spare parts and tools



**HT8WRENCH**



**HT8LAMPTOOL**



**HT8BULBV3**

HT8 Series Spare Parts and Tools		
Part Number	Description	Price
<b>HT8WRENCH</b>	Installation wrench for Cutler-Hammer HT8 series and E22 series pushbuttons, switches, and indicators	check
<b>HT8LAMPTOOL</b>	Rubber lamp extraction tool for removing lamps from switches, indicators and stacklights	check
<b>HT8X1</b>	Spare anti-rotation ring for HT8 series. Included with each HT8 device. (not shown)	check
<b>HT8X2</b>	Spare trim ring for HT8 series. Included with each HT8 device. (not shown)	check
<b>HT8X3</b>	Spare sealing/spacing ring for HT8 series. Included with each HT8 device. (not shown)	check
<b>HT8GR1</b>	Spare grounding kit for HT8 series devices except non-PTT indicators. Included with each HT8 device. (not shown)	check
<b>HT8GR2</b>	Spare grounding kit for HT8 series non-PTT indicators. Included with each HT8 device. (not shown)	check
<b>HT8BULBV3</b>	24 volt incandescent lamp for HT8 illuminated devices. This is an extended lamp for enhanced illumination with HT8 devices. 50mA at 24 volts.	check
<b>HT8BULBV7</b>	120 volt incandescent lamp for HT8 illuminated devices. This is an extended lamp for enhanced illumination with HT8 devices. 19mA at 120 volts.	check

**NOTE:** The HT8 replacement lamps are for HT8 devices only. They will not work with Cutler-Hammer E22 devices or 22 mm metal devices.

# EAT•N 30 MM LEGEND PLATES

Cutler-Hammer



Pushbutton Operators and Indicating Lights			
Legend	Color of Field	Catalog Number	Price
Clamp	Black	HT8SP90	check
Close	Black	HT8SP73	check
Down	Black	HT8SP74	check
Emergency Stop	Red	HT8SP13	check
Fast	Black	HT8SP75	check
Faster	Black	HT8SP87	check
Feeder On	Black	HT8SP94	check
Feeder Off	Black	HT8SP95	check
Forward	Black	HT8SP15	check
High	Black	HT8SP16	check
In	Black	HT8SP17	check
Inch	Black	HT8SP18	check
Jog	Black	HT8SP19	check
Jog Forward	Black	HT8SP20	check
Jog Reverse	Black	HT8SP21	check
Low	Black	HT8SP22	check
Lower	Black	HT8SP23	check
Lube-fail	Black	HT8SP92	check
Motor Run	Black	HT8SP81	check
Motor Stop	Black	HT8SP82	check
Off	Red	HT8SP24	check
On	Black	HT8SP25	check
Open	Black	HT8SP26	check
Out	Black	HT8SP27	check
Power On	Black	HT8SP80	check
Raise	Black	HT8SP28	check
Ready	Black	HT8SP86	check
Reset	Black	HT8SP29	check
Reverse	Black	HT8SP30	check
Run	Black	HT8SP31	check
Safe	Black	HT8SP85	check
Slow	Black	HT8SP32	check
Slower	Black	HT8SP88	check
Start	Black	HT8SP33	check
Stop	Red	HT8SP34	check
Test	Black	HT8SP83	check
Transfer	Black	HT8SP93	check
Trip	Black	HT8SP84	check
Unclamp	Black	HT8SP91	check
Up	Black	HT8SP35	check

*\*Note: Dimensions: 1.77" (45mm) x1.77" (45mm)*

Selector Switch Operators/ Two-Position			
Legend	Color of Field	Catalog Number	Price
Forward Reverse	Black	HT8SP38	check
Hand Auto	Black	HT8SP39	check
High Low	Black	HT8SP40	check
Jog Run	Black	HT8SP41	check
Manual Auto	Black	HT8SP67	check
Off On	Black	HT8SP42	check
Open Close	Black	HT8SP43	check
Run Jog	Black	HT8SP44	check
Safe Run	Black	HT8SP45	check
Start Jog	Black	HT8SP46	check
Start Stop	Black	HT8SP47	check
Up Down	Black	HT8SP48	check

Selector Switch Operators/ Three-Position			
Legend	Color of Field	Catalog Number	Price
Auto Off Hand	Black	HT8SP49	check
For. Off Rev	Black	HT8SP50	check
For. Safe Rev.	Black	HT8SP69	check
Hand Off Auto	Black	HT8SP51	check
Man. Off Auto	Black	HT8SP68	check
Open Off Close	Black	HT8SP53	check
Run Safe Jog	Black	HT8SP70	check
Up Off Down	Black	HT8SP54	check
On Stop Safe	Black	HT8SP71	check

For PUSH/PULL Units			
Legend 3/32" lettering	Color of Field	Catalog Number	Price
ON/OFF	Black	HT8PP5	check
OPEN/CLOSE	Black	HT8PP8	check
UP/DOWN	Black	HT8PP11	check

Square Blank Plastic Legend Plates			
Lettering	Color of Field	Catalog Number	Price
Black	White/Silver	HT8SP76	check
White	Red/Black	HT8SP77	check

**NOTE: All 30 mm legend plates are plastic.**

