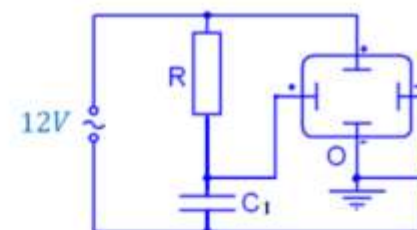
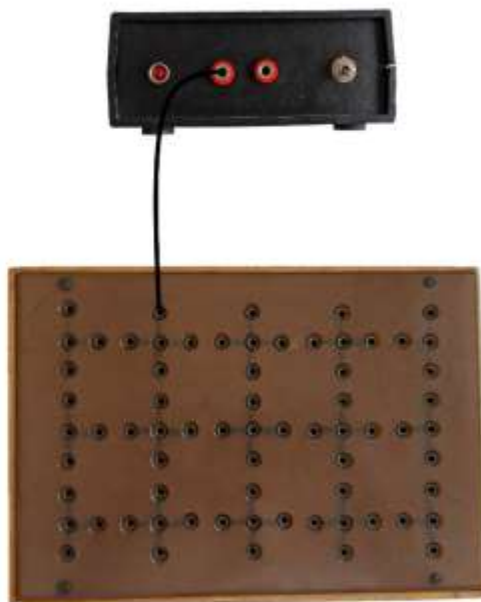


Slika 7.6. Merenje faznog pomeraja u RC kolu.

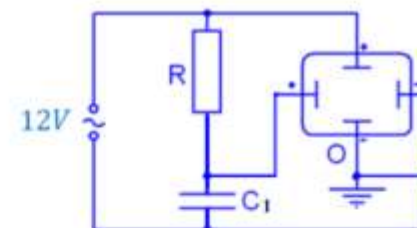
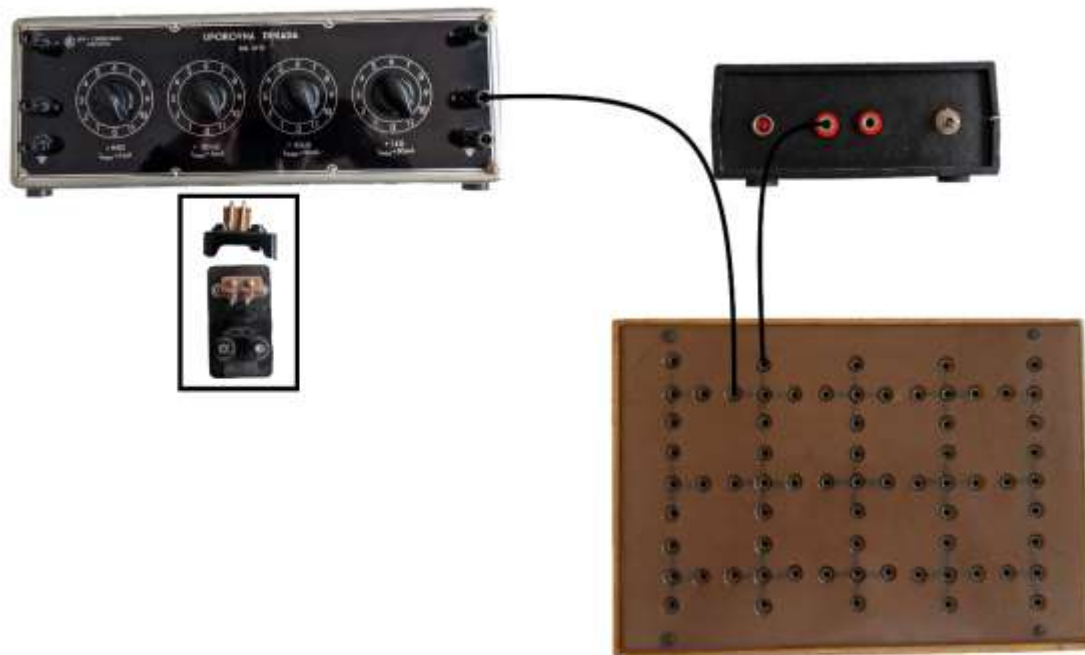


Šema je samo slična sa prethodnoj, suštinski je bitno različita. Na jedan kanal se dovodi napon sa kondenzatora, a na drugi kanal napon sa redne veze kondenzatora i otpornika. Zavisno od vrednosti R i $C1$ će se dobijati prostoperiodični naponi različitog faznog smicanja, a zbog toga (u XY režimu) elipsa odgovarajućeg nagiba.



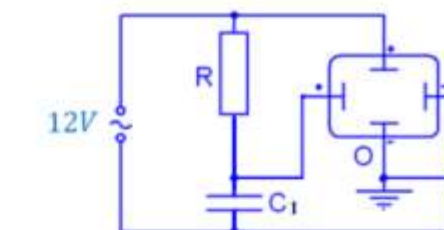
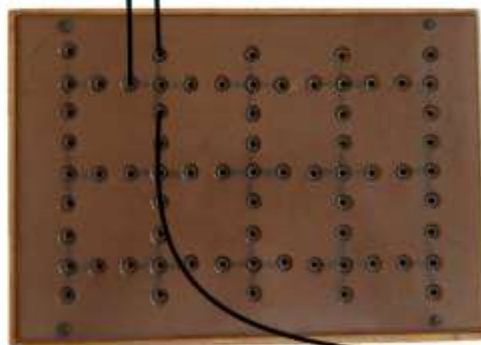
Slika 7.6. Merenje faznog pomeraja u RC kolu.





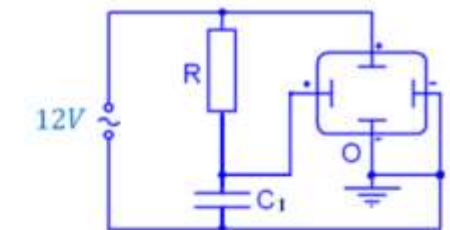
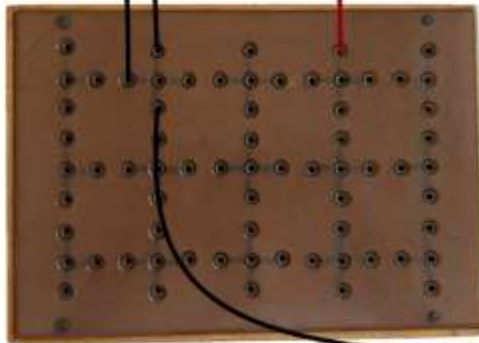
Slika 7.6. Merenje faznog pomeraja u RC kolu.





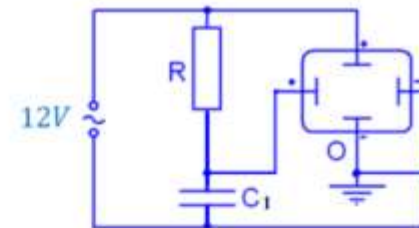
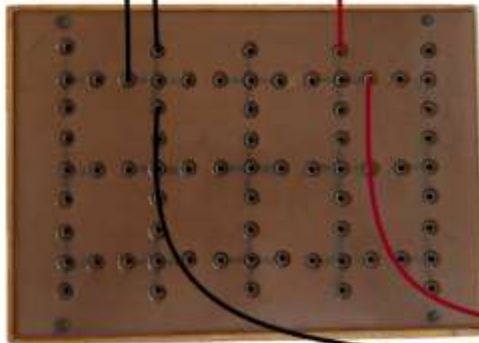
Slika 7.6. Merenje faznog pomeraja u RC kolu.



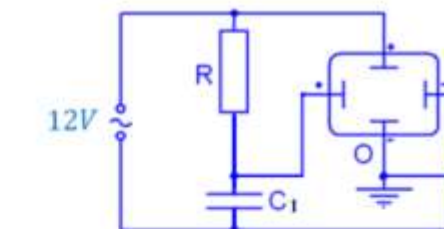
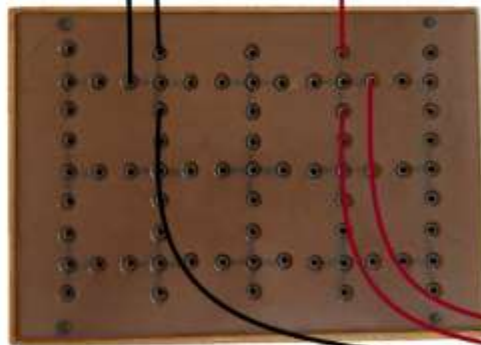


Slika 7.6. Merenje faznog pomeraja u RC kolu.



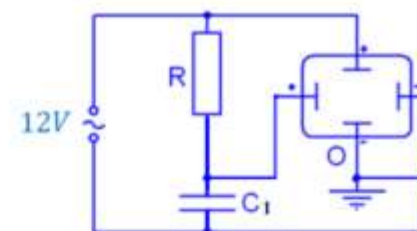
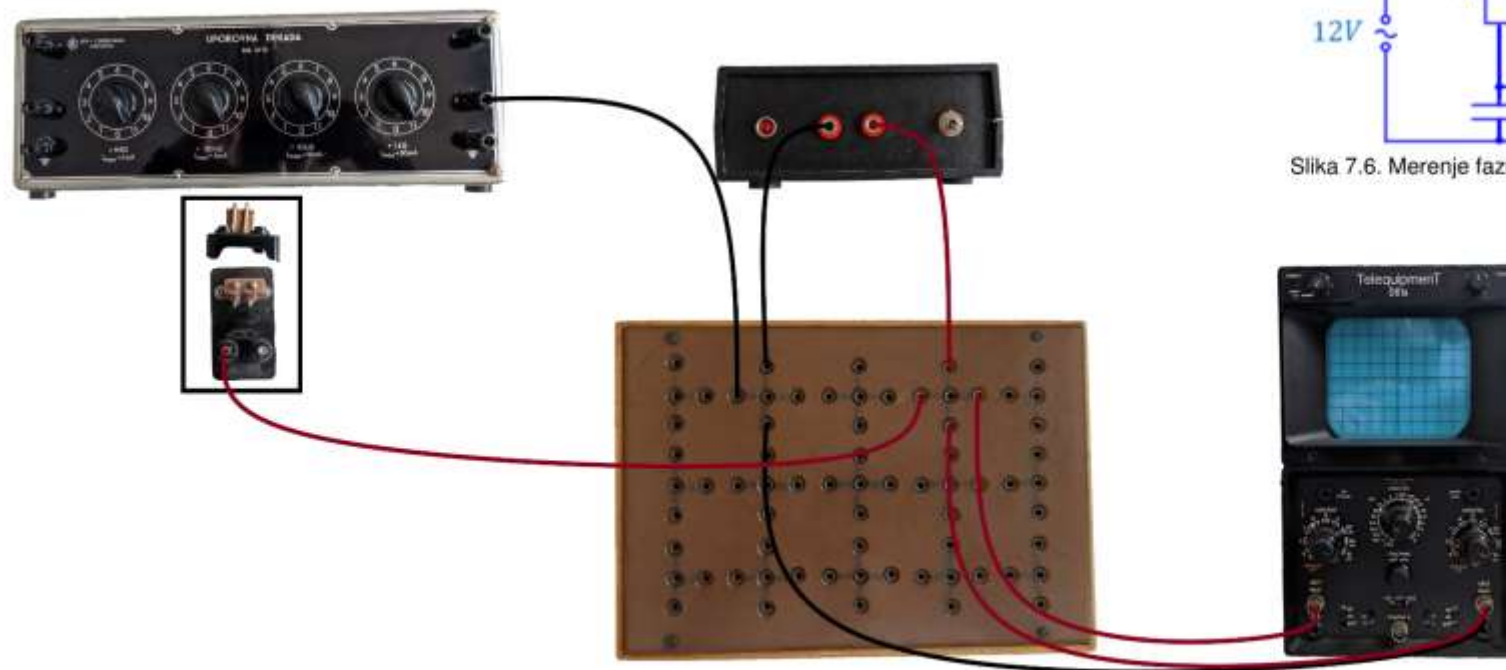


Slika 7.6. Merenje faznog pomeraja u RC kolu.

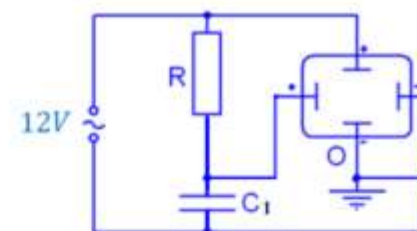
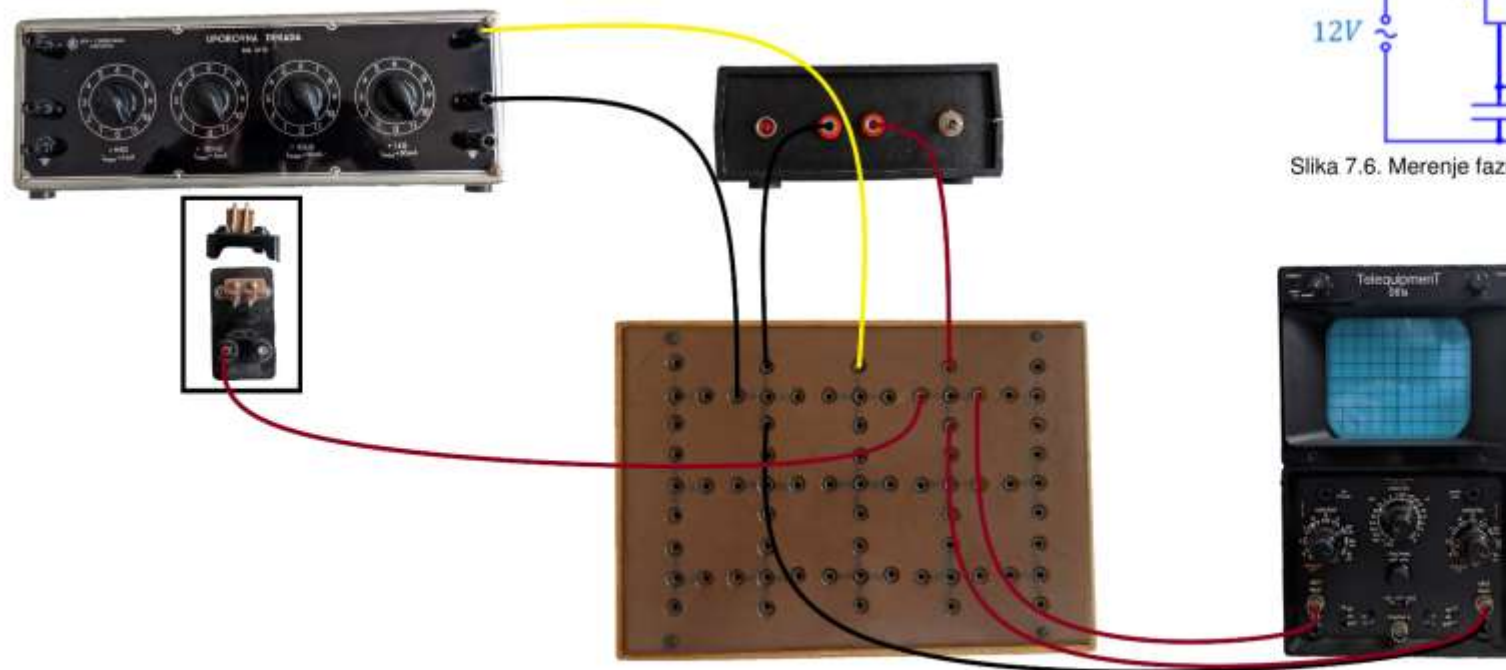


Slika 7.6. Merenje faznog pomeraja u RC kolu.

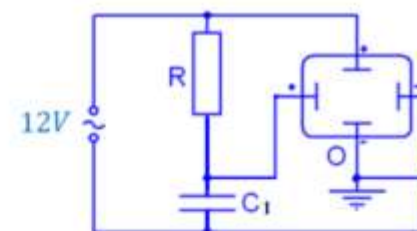
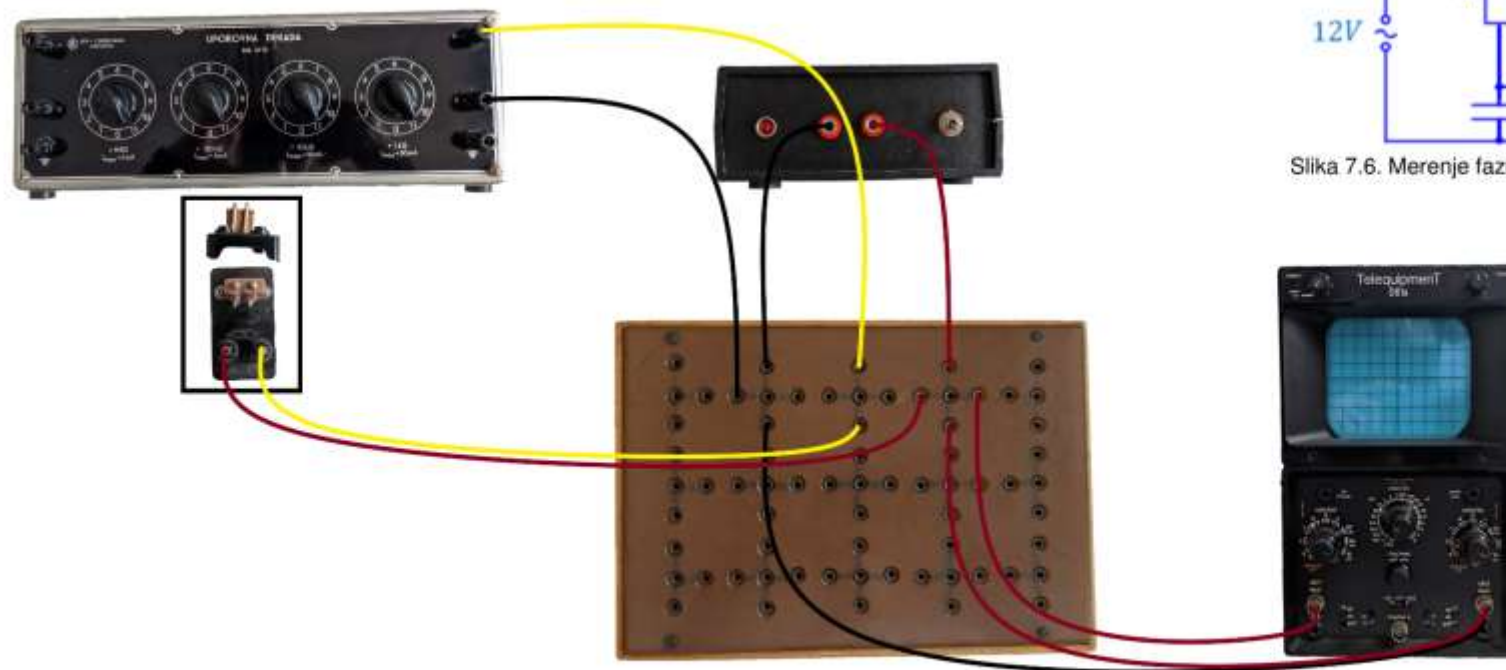




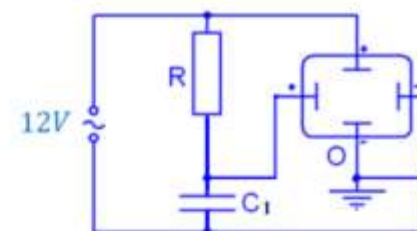
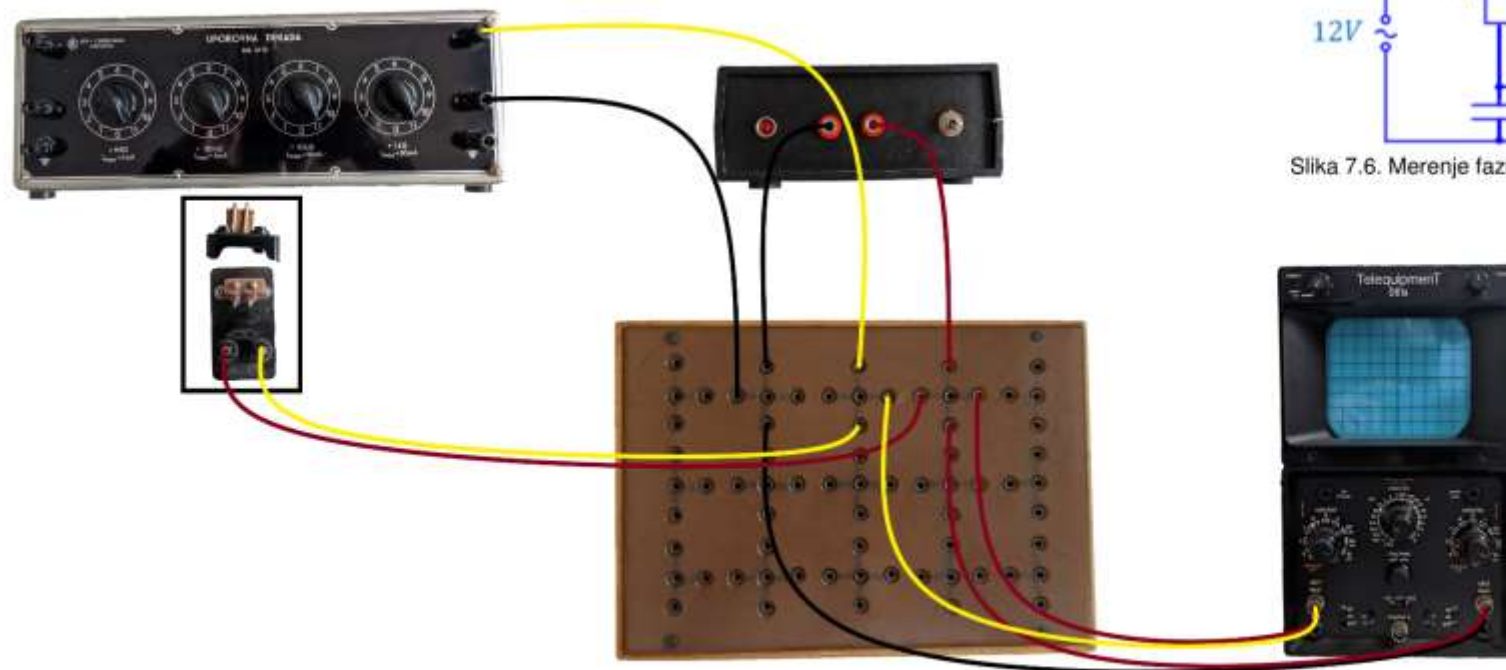
Slika 7.6. Merenje faznog pomeraja u RC kolu.



Slika 7.6. Merenje faznog pomeraja u RC kolu.



Slika 7.6. Merenje faznog pomeraja u RC kolu.



Slika 7.6. Merenje faznog pomeraja u RC kolu.

R kΩ	1	2	3	4	5	6	7	8	10	12	15	20
f_c Hz												
φ °												
C pod	3	6	8	10	10	11	11	11	10	8	8	6
D pod	22	21	20	18	17	16	14	13	12	10	8	6
$ \varphi_m $ °												
$\Delta\varphi/\varphi$ %												

Tabela 7.3. Rezultati merenja faznog pomeraja u RC kolu.